

RUGBY LEAGUE EUROPEAN FEDERATION

ANNUAL REPORT|2010|



RLEF PROFILE

The Rugby League European Federation's statutory objectives are to foster, develop, extend, govern and administer the sport of rugby league throughout Europe. Its rapid growth since 2003 has impelled the extension of that remit to additional, non-European regions. In 2010, the RLEF administered national governing bodies [NGBs] in North Africa, the Middle East, the Caribbean and North America, in addition to its diverse European responsibilities.

RLEF VISION AND VALUES

EMPOWERMENT

Enhance the growth of rugby league among members, in all facets, through a policy of empowerment



DYNAMISM

The RLEF recognised as a dynamic, results based leader



CULTURE

Cultivate rugby league culture among member nations, making the sport a habitual part of participants' lives



CONTENTS

RLEF PROFILE	2
MESSAGE FROM THE CHAIR	3
GENERAL MANAGER	5
COACHING MANAGER	7
MATCH OFFICIALS MANAGER	8
MEDIA MANAGER	9
GOVERNANCE	11
STRATEGY	13
OFFICIAL TOURNAMENTS	16
AFFILIATED TOURNAMENTS	18
FINANCIAL REPORT	21
THE BOARD	23
APPENDIX1: ORGANISATION	24
APPENDIX 2: DOMESTIC CH.	25

A MESSAGE FROM THE CHAIR

As Chairman of the RLEF it gives me great pleasure to see the sport continue to expand at such a rapid speed over the past 12 months.

There have been many highlights during the year from Wales winning the Alitalia European Cup in a thrilling finale against France, to the emergence of the sport in North America with the successful Atlantic Cup proving to be a competitive tournament featuring Canada, Jamaica and eventual winners USA. Next year's competition will have extra significance with South Africa taking the place of Canada and the eventual winners gaining a place amongst the elite of the game at the 2013 Rugby League World Cup.

It is also gratifying to see the game in Europe prospering with many nations playing competitive matches throughout the year. We saw Italy, Serbia, Russia, Ukraine and Germany all producing outstanding performances. The highlight in the European calendar was the European Cup sponsored by Italy's international carrier Alitalia.

The six matches were all terrific close encounters. Under the guidance of Iestyn Harris Wales managed to overcome favourites France in the final match at Albi.



Wales' reward is their place in 2011 Four Nations tournament alongside holders New Zealand, Australia and England. Attendances in the Alitalia European Cup were very encouraging with France averaging around 10,000 in their games, a commendable achievement.

The year brought change on the executive front. Kevin Rudd had worked tirelessly to grow the European game and it was understandable when he felt it was time to move on from his RLEF role. I take this opportunity to thank Kevin for everything he achieved. Following on from a recruitment campaign Danny Kazandjian was appointed as RLEF General Manager and he has enjoyed a successful and productive first year. It is also appropriate for me to acknowledge the considerable efforts of the RFL's European Development Director Niel Wood. Together Niel and Danny have achieved a great deal in 2010.

Back in the autumn we took the decision to restructure and expand the RLEF Board. This resulted in two appointments elected by the membership; Graeme Thompson from Scotland Rugby League, who has a strong pedigree in the game as the former Performance Director at the RFL and now working at UK Sport, and Serbian Rugby League Federation president Nebojša Sretenović. The additional members have enhanced the Board and given even greater energy and purpose to the RLEF. In due course we plan to recruit one or possibly two independent directors. Vice-chairman Nicolas Larrat and I are determined to have the right expertise to deliver our strategic objectives over the years ahead and this year saw us take a significant step in that direction.

Next year will see the creation of a comprehensive Technical Strategy, which is scheduled for implementation in March 2011. The objective is to elevate standards throughout the sport and provide every participating Rugby League governing body with a fully trained and qualified technical department. Over 30 countries will be represented and the all-embracing strategy has been designed to ensure that the sport is delivered to a suitable standard in the ever-growing number of nations using a common set of techniques and structures. The long-term aim is to make the European nations self-sufficient in terms of their own coach education programmes.

This is a very exciting time for the sport across the continent and beyond. With qualifying in 2011 for the 2013 World Cup we are building towards a superb showcase for the sport.

Richard Lewis

Chairman



GENERAL MANAGER

2010 was a year of evaluation, consolidation and reorganisation for the Rugby League European Federation, all of which have prepared the organisation for a strong future. In sporting parlance, it was the proverbial year of two halves, the second of which saw the RLEF assume, with confidence, vision and energy, its fundamental role as a leader of the code in the northern hemisphere.



The early part of the year saw some significant changes with staff movement and work on both the Constitution and the make-up of the Board of Directors. With the changes made, a new strategy produced and with an expanding Membership the remainder of the year was a hive of activity. Having worked with or for the RLEF since its inception in 2003, I feel strongly that the federation is at a threshold, having gained bridgeheads in numerous countries and now faced with the challenge of solidifying those gains to fully capitalise on the hard won achievements.



Above, from left to right: action from European Bowl [Malta v Norway]; Shield East [Ukraine v Latvia]; and the Alitalia European Cup [France v Wales]

The year ended with the RLEF contemplating 2011 with relish. We are now operating under a new constitution; are governed by a newly elected Board of Directors; exceedingly conscious of our corporate image; elevating the membership status of National Governing Bodies for the first time in the federation's history; administratively devolved into five regional clusters; possessed of a new eight-year strategy; having completed a diverse international fixture list, and in possession of a re-structured international calendar encompassing the next two world cup cycles; preparing Associate Membership application to the RLIF under the latter's new constitution; with new media and commercial partners; and, consequently, on a solid platform to take rugby league forward into 2011 and beyond.

In closing, I would like to pay tribute to the successes achieved by Kevin Rudd, a selfless and indefatigable servant to the RLEF, someone to whom the wider sport as a whole owes a debt of gratitude. His tenure resulted in the sport being played and enjoyed in a swathe of virgin territories. Continuing in his footsteps, it has been and continues to be a singular pleasure working with my colleagues at the RLEF and all the many people involved in the development of the sport across our membership.

The RLEF's staff have achieved remarkable progress in the field and I would like to pay tribute to Julia Bennison [Eastern Europe], Phil Caplan [media], Uwe Jansen [Germany], Anthony Micallef [Malta], Romeo Monteith [Jamaica], Andy Mulhall [Czech Republic], Remond Safi [MENA], Jovan Vujosevic [Central Europe] and James Vukmirovic [webmaster]. In addition, all the countless numbers of volunteers who work tirelessly throughout the RLEF's member nations continue to be the engine room of the sport whose dedication, vitality and enthusiasm propel rugby league forward.

I think I speak for all in saying that the RLEF truly feels as though it is in a position to make a real, tangible difference to the growth of rugby league, and we face a future that is replete with challenges with a great appetite to further the code's interests, wherever they may lie.

Danny Kazandjian
General Manager

A handwritten signature in black ink, appearing to be 'DK' with a long, sweeping underline.

TECHNICAL

COACHING

As RLEF Coaching Manager my role is two-fold. First, to select coaches to support RLEF nations and to ensure that they are suitably qualified and properly briefed as to their role. Secondly, to oversee the development of a technical strategy for coach development in those countries. There have been two major developments this year.



Coaches have been appointed to support countries involved in the RFL's World Cup Accelerator Programme. To date these are: Lebanon – Rob Powell and Latham Tawhai (Harlequins); Italy – Paul Broadbent (Wakefield Trinity Wildcats); Serbia – Lee Crooks (ex-Hull and GB); Jamaica – Craig Richards (RFL Regional Talent Coach); South Africa – Gary Schofield (ex-Hull and GB, currently coach of Barrow). The primary roles of these coaches are to develop players in the domestic competitions and to mentor coaches in those countries.

The second initiative has been the planning of a three-phase strategy for the development of coach education. Coaches from all member nations have been invited to a week's programme in London in March 2011, where they will complete a Level 2 coaching qualification and attend other technical sessions. Later in the year, staff will travel to up to five regional clusters to deliver further training, which will enable coaches in the domestic competition to become coach educators themselves. The final phase will involve observations and assessments of coaches and coach educators to ensure that suitably qualified staff are in place in each of the member nations, and thus make them self-reliant in terms of their coach development.

As a precursor to this a Level 1 course was delivered in Serbia in August with 12 coaches from four nations, Serbia, Czech Republic, Russia and Ukraine, attending. All coaches successfully completed the programme and the event allowed us to assess and to prepare for any difficulties inherent in delivering to a cross-section of coaches of different nationalities. Also, A Ukrainian coach, Artur Martyrosyan, travelled to the UK in November to attend a level 3 coaching course and is now working towards that qualification.

Meetings were also held with French Coach Education officials to try and align the UK and French coach education programmes and to ensure a joint approach going forwards.

Martin Crick
Coaching Manager

A handwritten signature in black ink, appearing to read 'M Crick', with a stylized flourish at the end.

MATCH OFFICIALS

Away from the elite Alitalia European Cup, the 2010 season saw a reduction in the number of fixtures for match officials mainly due to the absence of a major European youth event, which has traditionally been used for referee development. Despite this there were some great moments for match officials in RLEF fixtures.



Most notably, Serbian official Haris Dajc took control of the two Italy v Lebanon fixtures and, having been in place as Head of Referees in Serbia, is a great example of the opportunities available for officials based in mainland Europe. The European Shield and Bowl events were officiated by referees throughout the British community game including Tom Mather from the south, Phil Smith, Brian Armstrong from the North West and Cumbria respectively, Haydn Edwards from Wales and John Downham from Yorkshire.

The YIT Nordic Cup was a new addition to the RLEF calendar and was refereed by South African former Super League player Jamie Bloem while the Hotels of Jacksonville Atlantic Cup was refereed by full time Super League official Phil Bentham.

The big news is the confirmation of the 2011 RLEF Match Official Training event to take place in London in May. Officials from RLEF nations will be invited to attend the two day training event aimed at providing leading officials with the skills and resources to deliver match official courses training and development sessions themselves. This will allow new and existing match officials to take the first step on the RLEF Match Official Pathway leading to international fixtures and the possibility of officiating in the European Shield and other events from 2011.

Steve Davis

Match Officials Manager

A handwritten signature in dark ink, appearing to read 'Steve Davis'.

MEDIA

Certainly 2010 saw an improved awareness of the work being undertaken across Europe, not only in terms of reported games but in highlighting major initiatives within the member nations. New reporting templates and practices have been instituted to help generate more and different stories of wider interest and the media database widened both for central RLEF releases and within the countries themselves.



Some of the hard work still goes unreported and we continue to try to address that problem, but the general impression seems to be that the rugby league public can sense that there is growing, meaningful activity in established and either expanding or new areas and markets.

The most tangible successes this year came with the Alitalia European Cup not least by dint of its named sponsorship and French terrestrial television coverage. Extra weight and credibility was given to the competition as a result and reflected in the written and broadcast outlets that featured the games. Allying Four Nations qualification to the Cup also invested it with greater meaning and gravitas. Squad announcements and preview material pre-game were more reliable, regular and to a standard template enabling greater media planning and, therefore, overall impact. It is important to now institute follow up, quote-led features and post match reaction.



From left: the refreshed RLEF logo...the old logo...and the front page of the new official website www.rlef.eu.com

Hopefully a greater sense of news value is starting to filter through, particularly among the more proactive nation's media and inventive items such as Rob Powell and his Lebanon Diary found multiple interested outlets. A regular weekly media briefing between members of the RLEF management commenced in September with a focus on generating content and assessing news value with relation to Full and Affiliate Members. The success of the pilot scheme will ensure the dissemination of more similar items and that all competing countries are regularly featured in a filtered manner.

We were able to strengthen positive working relationships with a number of Member press officers, notably the FFRXIII's Tessie Tixeire, whose efforts during the Alitalia European Cup were commendable and fruitful. In addition, regular co-ordination and dissemination was established with Conor Kelly [RLI], Faysal Jaber [LRLF] and Ian Golden [WRL], strengthening our corps of designated press officers in the field.

We can improve in many areas and we continue to work with Member nations to put in place better channels for communication, better practices and improved information about what is required from each to get the best possible press coverage.

In the coming year we will roll out the new RLEF logo, a fresh version of the existing, very recognisable logo. We will be re-launching the RLEF website in the early part of the year making it a very attractive, dynamic yet easily accessible site rich in up to the minute content. A new site, indeed, worthy of the dynamism of the RLEF and its members.

Phil Caplan
Media Manager



GOVERNANCE

At the beginning of 2010 the RLEF Board was manned by a quorum of two Directors, the Rugby Football League's Richard Lewis, the chairman, and the *Federation Française de Rugby à Treize*'s Nicolas Larrat, the vice-chairman. Introducing a new constitution and increasing the number of Directors from within and without the Membership, to ensure a thorough discourse and dynamic leadership, as well as to reflect the cosmopolitan and expanding nature of the federation, were key aims of the Board in 2010.

CONSTITUTION

The adoption of a new constitution was deemed necessary for two reasons: firstly, to pave the way for the RLEF to become a limited liability company; secondly, compliance with the RLIF constitution to enable the RLEF to apply for Associate Membership of the global governing body [which it will do in January 2011].

The drafting of a new constitution was completed by the RFL's in-house lawyer, Karen Moorhouse, and promulgated by the RLEF Council at the 27 August Annual General Meeting.

**27 AUGUST:
NEW CONSTITUTION
ADOPTED BY COUNCIL**

**8 OCTOBER:
TWO NEW DIRECTORS
ELECTED TO THE
BOARD**

BOARD OF DIRECTORS

The expansion of the Board was achieved through an election of two candidates from within the Membership in October. The seven Full and Affiliate Members were asked to conduct an election by secret ballot, each voting for their favourite two of the four nominees proposed.

The Lebanese Rugby League Federation, Scotland Rugby League, the Serbian Rugby League Federation and Wales Rugby League all nominated strong candidates, with the SRLF's president, Nebojša Sretenović, and SRL Board Member Graeme Thompson, elected to the RLEF Board on 8 October.



Above: Wales's Gareth Thomas

The role of the Directors was defined by the following criteria:

- Provide a balanced view from the Membership
- Help to guide the actions and overall direction of the RLEF in conjunction with its employees and policies
- Approve annual budgets and guide the fiscal policies of the RLEF
- Be accountable to the Membership for the RLEF's performance

The search for two new independent Directors, to achieve the constitutional maximum of six, was an agenda item at Board level in August and October, with the Board agreeing in October that the most sought after areas of expertise were in finance, marketing and commercial.

In 2010 the RLEF's Board of Directors met on:

- 11 June, Leigh, England
- 26 August, London, England
- 22 October, Albi, France

CONFERENCE AND AGM

In addition the RLEF held its first Conference, in London from 26-29 August, which included the Annual General Meeting on 27 August. At the AGM the Council unanimously approved the Articles of Association and the new constitution was formally adopted. In addition, WRL was approved as a Full Member by the Council.

The RLEF Conference included a seminar that saw seven key note speakers from the RLEF and RFL address the delegates. Topics covered included a review of the RLEF Strategy 2010-2017, the Technical Strategy 2011, competition structure and domestic competitions and two case studies of missions undertaken to Eastern Europe in 2010.

Following post-conference consultations the consensus among delegates was that the first RLEF Conference was a helpful and worthwhile exercise, with a reported 87% satisfaction rating reported for the conference as a whole.

RLEF AGM

35 delegates attended

21 Member and
affiliated organisations
represented

STRATEGY

To expedite the Board's directives, a new executive team was appointed in June led by Danny Kazandjian, RLEF General Manager. The executive's initial task was to write a comprehensive development plan, to be signed off by the Board. The 2010-2017 RLEF Strategy, headlined by the federation's vision and values of "empowerment, dynamism and the cultivation of rugby league culture", was formally adopted by the RLEF Board on 26 August.

RLEF STRATEGY: KEY FOCUS AREAS

PARTICIPATION NUMBERS

Domestic championships
Technical empowerment

STRONG MEMBERS

Independent Members
Cluster system
Increase in Membership

CORPORATE RLEF

Staff productivity
Focused investment
Increase revenue & visibility

TECHNICAL

In August the Board approved the Technical Strategy, whose philosophy reflects the federation's value of empowerment. Consultations between the RFL and RLEF staff resulted in a multi-phase project being drafted covering both coaching and match officiating. Martin Crick and Steve Davis lead on both projects, which will be implemented in 2011 and result in all participating Members acquiring qualified tutors.

STAFF

The cluster system was adopted with the introduction of five RLEF regions: Atlantic, Middle East North Africa, and Western, Central and Eastern Europe. Three of these theatres were placed under the responsibility of regional directors. Remond Safi, the COO and treasurer of the Lebanese Rugby League Federation based in Beirut, joined the RLEF and assumed control of MENA; Jovan Vujosevic, general manager and Board member of the Serbian Rugby League Federation, was promoted from Serbian development officer to assume control of Central Europe; and Julia Bennison assumed control of Eastern Europe, essentially continuing her previous role as Russian Coordinator. Finances and operational requirements meant that Atlantic and Western Europe regional directors were not seen as essential appointments in 2010.

These appointments reflect the strategic aims of the RLEF to increase participation numbers primarily through domestic championships, as well as underlining growth in certain highly productive countries.

Steve Davis resumed his role as RLEF Match Officials Manager while, in June, the RFL's Elite Coaches Manager, Martin Crick, was appointed RLEF Coaching Manager.

MEMBERSHIP

Elevating NGBs through the RLEF's statutory Membership strata is a central theme of RLEF strategy. By achieving Full and Affiliate Membership nations would, by definition, be more robust and responsible for greater activity.

In August WRL chairman Mark Rowley presented his organisation's application for Full Membership to the Board, which recommended WRL's application to the Council. WRL became a Full Member on 27 August. Rugby League Ireland and Scotland Rugby League followed suit in October, following their presentations to the RLEF Directors at the 22 October Board meeting.

3 NEW FULL MEMBERS

3 NEW AFFILIATE MEMBERS

1 NEW OBSERVER

During the same meeting the Federazione Italiana Rugby League and the Jamaican Rugby League Association were elevated to Affiliate Members, while the newly formed Russian Association of Rugby League Clubs was granted Affiliate Membership pending ratification from the RLIF. Canada Rugby League's exemplary application for Official Observer status was approved, with the Board agreeing it would be used as the standard model for future Observer applications.



Above: coaching in Serbia, Malta and Lebanon

The RLEF's Membership at the end of 2010 is as follows:

FULL



AFFILIATE



OBSERVER

Association of Catalunya Rugby League, Canada Rugby League, Czech Rugby League Association, Emirates National Rugby League, Latvian Rugby League, Malta Rugby League, Maroc Rugby League, Netherlands Rugby League Bond, Rugby League Deutschland, Rugby League Norway, Ukrainian Rugby League Federation

UNRANKED

Denmark, Greece, Kuwait, Palestine, Qatar, Saudi Arabia, Sweden

OFFICIAL TOURNAMENTS

With the strategy mapping the RLEF's revised competition structure until 2017, the established competitions were all played in their traditional slots, with some significant format changes and some new tournaments entering rugby league's lexicon.

ALITALIA EUROPEAN CUP

Most significantly, the European Cup reverted to a four-team championship format following the six-team-plus-finals-day 2009 competition. Two one-point victories and six attractive, well-staged and well-contested matches endorsed the value of the tournament, underlined the appetite for meaningful international competition outside the big three nations, and the strength of the European Cup brand, which was, unequivocally, enhanced.

France was granted three home fixtures, which enabled them to attract live television broadcasts on two networks, *Direct 8* and *Orange TV*, and more than 30,000 fans to Avignon and Albi, while Sky Sports broadcast one-hour highlights programmes after each round. In financial terms, the 2010 edition outperformed the 2009 tournament with increased gates and sponsorship, while the latter, a major pan-European brand, supported the 'major event' credentials of the European Cup.



	W	L	PF	PA	+/-	Pts
WALES	3	0	103	63	40	6
FRANCE	2	1	98	45	47	4
SCOTLAND	1	2	76	108	-32	2
IRELAND	0	3	76	131	-55	0

9 OCTOBER	FRA 58 – 24 IRE	Avignon
10 OCTOBER	SCO 22 – 60 WAL	Glasgow
16 OCTOBER	FRA 26 – 12 SCO	Albi
17 OCTOBER	WAL 31 – 30 IRE	Neath
23 OCTOBER	FRA 10 – 11 WAL	Albi
24 OCTOBER	IRE 22 – 42 SCO	Dublin

EUROPEAN SHIELD

The European Shield was divided into West and East three-team tournaments in 2010, reflecting a broadening of the Membership. The Shield will run under the three-team format in 2011 before switching to a four-team championship style format, played on a biennial cycle in 2012-13 and 2014-15. This switch reflects RLEF strategy and will have a world cup qualification element.

SHIELD WEST



Serbia returned to the Shield following their 2009 European Cup campaign to claim their second Shield title. The heavy defeat to Germany acted as a catalyst for the CZRLA to begin a general and thorough overhaul of the sport in the Czech Republic.

	W	L	PF	PA	+/-	Pts
SERBIA	2	0	96	18	78	4
GERMANY	1	1	110	40	70	2
CZECH REP.	0	2	4	152	-148	0

26 JUNE	CZE 4 – 56 SER	Prague
3 JULY	SER 40 – 14 GER	Belgrade
17 JULY	GER 96 – 0 CZE	Hochspeyer

SHIELD EAST



Russia was easily the strongest side in a Shield East competition that was notable for the first ever match between neighbours Russia and Ukraine. Visa difficulties forced a change to the original fixtures but resulted in each nation playing one home and one away match.

	W	L	PF	PA	+/-	Pts
RUSSIA	2	0	106	18	88	4
UKRAINE	1	1	126	52	74	2
LATVIA	0	2	4	166	-162	0

27 JUNE	RUS 62 – 14 UKR	Vereya
31 JULY	LAT 4 – 54 RUS	Riga
17 JULY	UKR 112 – 0 LAT	Kharkov

EUROPEAN BOWL



The usual three-team format was disrupted by Belgium's late withdrawal from the tournament. Norway was extremely impressive in its official tournament debut while the MRL was pleased with the media coverage and support the match received.

	W	L	PF	PA	+/-	Pts
MALTA	1	0	30	20	10	2
NORWAY	0	1	20	30	-10	0

4 JUNE **MAL 30 – 20 NOR** Hamrun

AFFILIATED TOURNAMENTS

A number of other affiliated tournaments were played in 2010. Most of these form integral parts of the RLEF strategy in that they are conceived, managed and played by regional partners, with the promise of forming important pieces in the RLEF's competitive hierarchy, including, in the case of the MENA Championship and Atlantic Cup, world cup qualification, in the future.

MENA CHAMPIONSHIP

The MENA Championship was launched in 2010 as the flagship MENA representative competition. The event ended controversially with the British Asian Rugby Association unable to fulfil its second fixture, prompting an independent investigation.



	W	L	PF	PA	+/-	Pts
LEBANON	2	0	60	10	50	4
BARA	0	2	10	60	-50	0

3 NOVEMBER **LEB 30 – 10 BAR** Tripoli

6 NOVEMBER **LEB 30 – 0 BAR*** Tripoli

*Match awarded by forfeit

ATLANTIC CUP



The second edition of the Atlantic Cup was played in Florida. Excellently organised for a second consecutive year in Jacksonville, the cup will play a central role in the development of the Atlantic cluster, providing the constituent nations the vehicle with which to cooperate annually.

	W	L	PF	PA	+/-	Pts
USA	2	0	82	38	44	4
JAMAICA	1	1	58	48	10	2
CANADA	0	2	24	78	-54	0

16 NOVEMBER **USA 36 – 26 JAM** Jacksonville

18 NOVEMBER **JAM 32 – 12 CAN** Jacksonville

20 NOVEMBER **USA 46 - 12 CAN** Jacksonville

YIT NORDIC CUP



Norway took a proactive stance in organising the YIT Nordic Cup with neighbour Sweden in November, displaying an exemplary leadership role in northern Europe.

	W	D	PF	PA	+/-	Pts
SWEDEN	0	1	20	20	0	1
NORWAY	0	1	20	20	0	1

30 OCTOBER **SWE 20 – 20 NOR** Gothenburg

MENA UNDER-16s CHAMPIONSHIP

Drafted by the MENA nations collectively in 2009 as one of three annual regional tournaments, and adhering to the RLEF's strategic objective of proactive clusters, the first MENA Under-16s Championship was hosted in the American University of Beirut's multi-million dollar Hostler Centre.



	W	L	PF	PA	+/-	Pts
SAUDI RL SCHOOLS	1	0	34	14	20	3
LEBANON	1	0	30	20	10	3
PALESTINE XIII	0	2	6	36	-30	0

1 MARCH	LEB 16 – 6 PAL	Beirut
4 MARCH	KSA 20 – 0 PAL	Beirut
6 MARCH	LEB 14 - 14 KSA	Beirut

RLEF FRIENDLY INTERNATIONALS

In addition to the tournaments administered by the RLEF there were also friendly internationals, demonstrating the steadily increasing activity on the Continent and the growing choice of opponents and destinations available to the Membership. Below is a list of all internationals with at least one RLEF Member national team participating.

10 JANUARY	QATAR RL SCHOOLS 36 - 34 LEBANON U16	Doha
6 JUNE	UKRAINE 6 – 32 BARLA U23	Kharkov
9 JUNE	UKRAINE 4 – 68 BARLA U23	Kharkov
12 JUNE	ENGLAND 60 – 6 FRANCE	Leigh
29 JUNE	LATVIA 6 – 106 W. YORKS POLICE	Riga
10 JULY	CZECH REP. 16 – 66 CATALUNYA	Prague
19 SEPTEMBER	CANADA 16 – 22 USA	Toronto
22 SEPTEMBER	ITALY 8 – 16 LEBANON	Monselice
25 SEPTEMBER	ITALY 24 – 16 LEBANON	Padova
6 OCTOBER	LEBANON U16 28 - 0 PALESTINE RL XIII U16	Tripoli
6 OCTOBER	WALES 6 - 13 ITALY	Wrexham

FINANCIAL REPORT

The RLEF has focussed on seeking greater effectiveness and improvements in efficiency during 2010. This resulted in a better use of grants from the RLIF and RFL and saw a reduction in the operating costs to £225,077 [2009: £291,795].

The support of the RFL continued strongly through 2010 in both support for the European Cup and also, indirectly through officer time dedicated across many disciplines. The European Cup also saw the attraction of title sponsor Alitalia, which provided a five-figure sum to support the competition. Alitalia have intimated their satisfaction and we hope to build on the relationship through 2011 and beyond.

Direct grant expenditure fell to £23,200 [2009: £31,705]; however, when indirect and in-kind support was added, the majority of Affiliate Members received an increased overall grant. These more mature nations received a lower grant from the RLEF as they were able to attract support from other varied sources rather than directly from the RLEF.

Central administration costs fell to £149,819 [2009:£192,872] despite the number of officers remaining static. This was largely achieved through a reduction in overall travel and employment of more modern technology. The improved effective and efficient use of resources also showed in expenditure on other activities which fell to £40,227 [2009: £60,774], this largely being due to a reduction in travel and accommodation costs.

.

INCOME STATEMENT

For the year ended 31 December 2010

	2010: Draft	2009
	£	£
<u>Income</u>		
Members Fees	1,980	1,800
RFL & RLIF Contribution	223,097	289,995
Total Income	225,077	291,795
<u>Expenditure</u>		
Grants	23,200	31,705
Activity	40,227	60,775
Administration	149,819	192,872
Other Costs	11,830	6,444
Total Expenditure	225,077	291,795
Surplus	-	-

THE RLEF BOARD

RICHARD LEWIS – CHAIRMAN

A former Davis Cup player, Richard Lewis joined the RFL in April 2002 as Executive Chairman, a role he fulfilled until 2009 when he became chairman following his appointment as chairman of Sport England. He became the RLEF's chairman in 2004 and is currently the vice-chairman of the RLIF.



NICOLAS LARRAT – VICE-CHAIRMAN

Nicolas Larrat joined the RLEF as vice-chairman upon assuming the presidency of the FFRXIII in 2004. Prior to that Nicolas, a lawyer by profession, was the vice-president from 2001. He comes from good *treiziste* stock, having played loose-forward for Toulouse for eight years.



NEBOJŠA SREtenović – DIRECTOR

The first ever Serbian rugby league national team captain, Nebojša Sretenović played a pivotal role in the formation of the Serbian rugby league in 2001 and has been an ever-present member of the SRLF Board, serving as president since 2009. In 2010 the RLEF Council elected Nebojša to the RLEF Board.

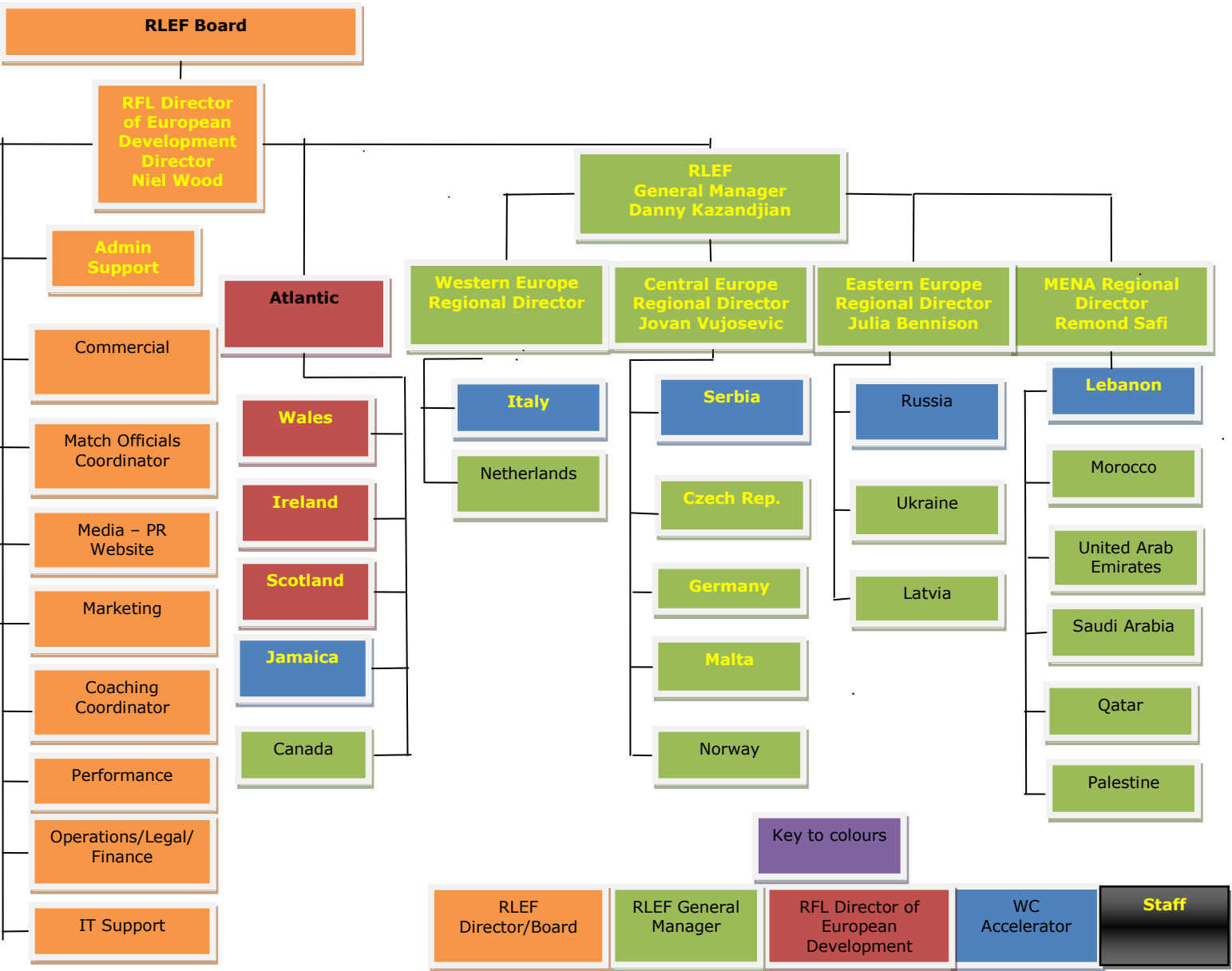


GRAEME THOMPSON – DIRECTOR

The RFL's former Performance Director and England team manager during the 2008 Rugby League World Cup, ex-Scotland international Graeme was elected to the RLEF Board in 2010. He is currently a performance advisor with UK Sport.



APPENDIX 1: RLEF ORGANISATION



APPENDIX 2: DOMESTIC CHAMPIONSHIPS

In 2010 the following members ran domestic championships:

MEMBER	STATUS	Sr. LEAGUE [clubs] CHAMPIONS	2 ND DIVISION* [clubs]	Jr. LEAGUE
ENGLAND	FULL	Engage Super League [14] Wigan RLFC	Cooperative Ch. [11] Cooperative Ch. 1 [11] Multiple amateur leagues	Multiple
FRANCE	FULL	ELITE 1 [10] FC Lézignan	ELITE 2 [9] 1 Sr. amateur ch. [8] 6 regional leagues	Multiple
IRELAND	FULL	Carnegie Ulster [6] Carnegie Leinster [7] Carnegie Munster [4] Treaty City Titans*		
SCOTLAND	FULL	RL Conference [8] Carlisle Tigers	University [1]	9 clubs
WALES	FULL	Cooperative Premier Div. [6] Valley Cougars	Championship [4]	Multiple
ITALY	AFFILIATE	North Ch. [3]** South Ch. [3] XIII Del Ducato Piacenza*		
JAMAICA	AFFILIATE	Kingston & St. Andrew Ch. [4] Vauxhall Vultures	St Catherine Ch. [4] University Ch. [3]	9 schools
LEBANON	AFFILIATE	Bank of Beirut RL Ch. [7] LAU Immortals RLFC	RL Shield [5]	9 schools
RUSSIA	AFFILIATE	Centre Ch. [6] Vereya Bears RLFC	South Ch. [4]	
SERBIA	AFFILIATE	Serbian RL Ch. [8] Dorćol Spiders RLFC	Second Division [5]	2 clubs
CZECH R.	OBSERVER	Czech Ch. [4]*** Beroun Black Panthers		
MALTA	OBSERVER	Championship [2]*** South Malta		
NORWAY	OBSERVER	Norwegian Ch. [3]***		

Oslo RK			
UKRAINE	OBSERVER	Ukrainian Ch. [6] Legion XIII	4 clubs

- * Minimum criterion for Full Members is four second grade or U21 or student teams. “Clubs” in this section can include university or college teams as well as private sports clubs.
- ** Championship format not completed due to southern group seceding from FIRL after two rounds.
- *** Not recognised as official RLEF domestic championship due to minimum number of teams [4] or number of rounds [3]
- # Club became national champion after regional league play-off