

RUGBY LEAGUE EUROPEAN FEDERATION

ANNUAL REPORT | 2012 |





England Knights take on Scotland in the Alitalia European Cup in Edinburgh - October



Lebanon and Saudi Schools play the first U18 representative match in the Middle East - February

CONTENTS

MESSAGE FROM THE CHAIR	3
RLEF PROFILE & VALUES	6
GENERAL MANAGER	7
COACHING MANAGER	10
MATCH OFFICIALS MANAGER	12
MEDIA MANAGER	14
GOVERNANCE	15
STRATEGY	18
OFFICIAL COMPETITIONS	28
AFFILIATED COMPETITIONS	31
FINANCIAL REPORT	36
THE BOARD	38
APPENDIX1: ORGANISATION	40
APPENDIX 2: DOMESTIC CH.	41

A MESSAGE FROM THE CHAIR

I was delighted to be elected the new chairman of the Rugby League European Federation by my fellow directors in late July, joining a clearly progressive organisation at a key milestone in its history – its tenth year since inauguration in Paris in January 2003.

I assumed the role vacated by Richard Lewis, who departed rugby league in April to take up the chief executive's post at the All England Lawn Tennis Club after a tremendously successful decade with the RLEF and the Rugby Football League. It was Richard himself who conceived and then managed the creation of the RLEF, and therefore the sport's European and internationalist advocates owe him a huge debt of gratitude for his foresight and leadership. I will simply echo RFL chief executive Nigel Wood's sentiments in saying that history will look back at Richard's tenure as a golden decade for rugby league.

It is safe to say, then, that I joined the RLEF at an important time in its own journey and I have enjoyed my seven months on board. While the Board and our member National Governing Bodies can rightly laud the achievements of our tenth year and a preceding decade replete with accomplishments, those celebrations were mitigated greatly in a year that was punctuated by tragedy, following the untimely death of French Federation secretary, and



RLEF and Rugby League International Federation director Hervé Guiraud, in April.

While I did not have the opportunity to work closely with Hervé his reputation was that of a deeply committed, honourable and capable man.

I think it is appropriate to recall Richard Lewis's tribute to him at the time of his passing: "Hervé was always such a gentleman whenever I met him. Very modest and unassuming but with a ready smile and sense of humour.

His knowledge and love of rugby league was immense and he could be relied upon to be a great support at RLEF and RLIF meetings. He will be sadly missed”.

Hervé’s passing also contributed in part to the departure of another colleague, Nicolas Larrat, who decided not to seek re-election to the presidency of the Fédération Française de Rugby à XIII in November. I would like to pay tribute to the work Nicolas has done in France and Europe since 2004, and look forward to working with his successor, Carlos Zalduendo. Upon his confirmation, Carlos remarked that “unity is the key to our success”. I echo that exhortation in a pan-European context and will continue to urge as much close co-operation between our members and stakeholders as possible.

With the RLEF having experienced a number of key personnel changes, I welcomed the re-election of my fellow directors Nebojša Sretenović and Graeme Thompson from within the membership ranks in August. Both of them have provided excellent leadership and counsel and will continue to provide stability and strategic direction until 2014. The Council also confirmed Brian Simpson MEP as the RLEF’s first ambassador and I both congratulate Brian and thank him for the work he has undertaken at a political and diplomatic level to further the RLEF’s interests.

In keeping with the theme of governance, the year saw the launch of the RLEF’s *Governance Foundation Project*, part funded by the European Commission, in Manchester in March. The ground-breaking project will result in more robust governance protocols throughout our growing and diverse membership – a critical sector as individual NGBs grow and begin to engage more regularly with public and private stakeholders, locally and regionally. With Europe’s well documented financial troubles continuing, it is vitally important for all sport governing bodies to demonstrate best practice in the governance sector and I am pleased to say that the RLEF is taking its leadership role in this area particularly seriously.

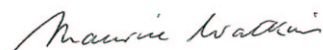
Strategically, the RLEF continues to contribute to the changing face of international rugby league, with the year witnessing the launch of the West Africa project in Ghana. The pioneering Ghana operation is a result of the sport’s recognition by the Commonwealth Games Federation in 2011 and is a good example of a sport that is willing to and capable of defining its own borders and geographical growth. None of these initiatives would be possible without forging bi- and multi-lateral partnerships and I am pleased to report that the RLEF’s close collaboration with UK Sport International continues to flourish. Our principal commercial partnership, with Alitalia, continued and their support for the RLEF has been tremendous.

Another sign of rugby league reaching new heights was the elevation of RLEF Full Members Lebanon and Serbia to an equivalent status with the RLIF in May. I congratulate both federations on their work and volunteer them as prime examples of what is achievable in non-traditional rugby countries, in often trying local circumstances.

Finally, I would like to congratulate the England Knights and the Czech Republic for their respective victories in the Alitalia European Cup and the European Bowl. This time next year we will be able to congratulate a new European Shield winner and also a new world champion, with the 2013 Rugby League World Cup now less than a year away. Exciting times ahead and I look forward to another successful year for the RLEF.

Maurice Watkins CBE

Chairman

A handwritten signature in dark ink, reading "Maurice Watkins". The signature is written in a cursive, flowing style.

RLEF PROFILE & VALUES

The Rugby League European Federation's statutory objectives are to foster, develop, extend, govern and administer the sport of rugby league throughout Europe. Its rapid growth since 2003 has impelled the extension of that remit to additional, non-European regions. In 2012, the RLEF administered national governing bodies [NGBs] in North Africa, the Middle East, the Caribbean and North America, in addition to its diverse European responsibilities. The year also saw the commencement of the sub-Saharan African Rugby League Project, further expanding the RLEF's geographical profile.

EMPOWERMENT

Enhance the growth of rugby league among members, in all facets, through a policy of empowerment



A Ukrainian coach tutor candidate delivers to Russian boys at Eastern Europe Phase 2 Coaching of the RLEF Technical Strategy - October

DYNAMISM

The RLEF recognised as a dynamic, results based leader



Italy and Serbia clash in the revamped European Shield - June

CULTURE

Cultivate rugby league culture among member nations, making the sport a habitual part of participants' lives



Aberdeen and Easterhouse U17 in action - August

GENERAL MANAGER'S REPORT

This year has been another productive twelve months in the RLEF's ever-expanding theatre of operations. The federation has remained true to its vision and values and 2012 witnessed the first shoots appearing from some of the concepts and projects adopted in 2010.



Chief among these was the ongoing execution of the Technical

Strategy – the project designed to train, qualify and then support a corps of match official and coach tutors throughout our membership and affiliates. The coaching strand completed its second phase in the remaining three of our five designated clusters - Atlantic, West and Eastern Europe – and several countries which completed either one or both strands of the project began hosting their own national courses as they continue down the pathway to self-sufficiency.

Italy, Jamaica and Serbia have graduated from both strands of the capacity building project and have all begun strengthening their own technical corps to support expanding domestic activity.



Left to right: The Czech Republic won the European Bowl; Russia raced away to a four-point lead in the European Shield; and England Knights won the Alitalia European Cup.

Not only were local coaches and match officials qualified, but the deployment of non-British, regional staff to support new nations became a reality. In December, Serbia sent a two-man team to Athens to conduct a coaching course for the budding Greek rugby league. This is a clear sign of the future shape of rugby league in Europe: the RLEF, assuming its responsibility to safeguard the integrity of the sport, how it is taught and practised, will continue to focus on high quality technical education and ongoing support mechanisms to bolster our nations while devolving leadership through an increasingly independent membership.

As indicated in our 2010-17 strategy document, the Technical Strategy is designed to ensure that technical personnel are produced proportionally to meet increasing local activity, and I am pleased to report that 2012 saw a number of encouraging signs in that category, specifically measured by the number of 13-a-side matches being played. The most striking increase occurred in Eastern Europe, in a year that saw the Association of Rugby League Clubs point towards a more confident future after several difficult years.

Russia, the Czech Republic and Ukraine more than doubled the number of matches played compared with the year before. The Czech Republic and Ukraine, both models of steady progress in the last 24 months, introduced a second division. Ireland, Jamaica and Serbia increased their domestic activity by fifty per cent, while outside the member nations, Canada saw an increase in local action with a five-team British Columbia championship up and running, alongside their Ontario operations. To a great extent, our members are increasingly anchoring their annual planning around regular championships, which will add stability and see progressive growth in the years to come.

A total of 28 Ghanaians received their Level 1 Coaching certificate after an intensive five days of training in Accra – November



In this context of a largely expanding local footprint, sustainability becomes an ever more important consideration, and the nurturing of strong member NGBs remains a key component of our strategy to ensure any gains are not ephemeral in nature. Government recognition [and funding] and Full Membership of the Rugby League International Federation are perhaps the principal indices by which to measure sustainability, and in 2012 both the Jamaican Rugby League Association and the Ukrainian Federation of Rugby League received full government recognition, while both the Lebanese and Serbian federations became Full Members of the Rugby League International Federation, with both also benefitting from sizeable increases in funding from their sports ministries.

The standardisation of membership throughout the RLIF was a welcome evolution in 2012 and now several RLEF nations can focus their own development strategies based on the requisite Full Member criteria of the RLIF, as well as national legislation. The RLEF's diversity is perhaps best illustrated through

the year's membership activity, with South Africa becoming a Full Member and Netherlands, Morocco and Trinidad and Tobago all becoming Observers.

Internationally, the reformed European Shield, now a biennial, four-team championship, got off to a great start with five excellent games out of six and all to play for in 2013. With the RLIF working on the most comprehensive global calendar in the game's history, the integration of the RLEF's competitions into a truly global framework is something I look forward to reporting on in 12-months' time. Comprehensive eligibility checks at all levels of competition continued in 2012; this has been an unnoticed but essential improvement in the way the sport perceives and values its own international integrity.

As has been remarked upon by the chairman in his comments, a pall cast by Hervé Guiraud's passing hung over much of the year; and on behalf of the RLEF staff I would like to pay the federation's respects to his memory. Our founding chairman, Richard Lewis, also took on a different role in April, and on a personal note I would like to pay tribute to his achievements and leadership that spanned a decade of unrelenting growth in Europe.

Finally, as usual, I leave my last words for my RLEF colleagues – whose ranks were boosted by the welcome addition of Ghana Development Manager Sylvester Wellington - who continue to push the game's boundaries in ever busier local and regional environments, sometimes amidst political and social upheaval, always stretching limited resources to the nth degree, yet remaining productive, positive and fiercely loyal to the sport.

Danny Kazandjian
General Manager

A handwritten signature in black ink, appearing to be 'DK' or similar, with a long, sweeping underline.

TECHNICAL

COACHING

2012 was another highly successful year in the development of coaching across Europe and beyond, building on the foundations laid the previous year. As a reminder, in March 2011 we launched the RLEF Technical Strategy with a four-day seminar at Brunel University, London, attended by 48 delegates from 19 countries.



Phase 2 of the coaching strategy then commenced, involving visits to regional clusters to deliver tutor and assessor training and to familiarise the staff with the RLEF level 1 qualification. By the end of 2011 Phase 2 had been delivered in Serbia [Central Europe cluster], to delegates from the Czech Republic, Russia, Serbia, Germany, Italy and Malta , and in Lebanon [Middle East North Africa] to coaches from Lebanon, Morocco and Palestine.

This work continued in 2012, with Phase 2 being delivered in Ireland [Western Europe], Jamaica [Atlantic] and Russia [Eastern Europe]. The course in Ireland was attended by coaches from the host nation, the Netherlands, Malta, Sweden and Norway, whilst coaches from the Ukraine attended the course in Russia, and America attended the Jamaica course.

Right: Coach trainees are put through their paces in the Atlantic cluster Phase 2 Coaching course in GC Foster College, Spanish Town, Jamaica - April



The most exciting development however was the commencement of Phase 3 of the strategy, with individual countries organising and delivering their first Level 1 coaching courses. Germany had the honour of being first in the field, closely followed by Jamaica, Italy and Serbia. In all cases the tutors proved very capable of delivering high-quality coach education. The result is that each country now has a group of qualified coaches working to develop the game.

Pride of place must go to Jamaica, where 28 coaches attended the Level 1 programme. In Serbia there were 14, including three from Bosnia, a significant development for the game in that region, in Germany

10 and in Italy six. What demonstrates most clearly the success of the strategy is the fact that subsequently tutors from Serbia delivered the first ever coaching course in Greece. We are well on the way to achieving our vision of countries being self-sufficient in delivering coach education, and of having coaches regionally being able to introduce the game to new areas.

The challenge of course is to ensure that those who attend the courses and qualify as coaches then do actually go out in the field to coach, thus increasing the number of participants in the game. I was particularly encouraged by the work in Jamaica, Serbia and Lebanon, where coaches are going into schools and introducing young children and teenagers to the game. This must be a priority, for these children will then become the players and coaches of the future.

A further exciting development occurred at the end of the year, when I visited Ghana to promote the game in West Africa. During the week I spent there 65 people attended one- or two-day courses to introduce them to the basics of the game and its core skills. There were teachers, both primary and secondary, PE Instructors from the armed forces, church youth group leaders, university personnel and some rugby union players and coaches. The highlight of the week was a game played on the last day, a game which was recognisably rugby league, and which demonstrated high levels of skill and physicality. I have no doubt that Ghana, with the appropriate level of support, can act as a springboard for the development of rugby league in the region.

All-in-all a very successful year on the coaching front, and I look forward to the completion of Phase 3 in 2013 and further exciting developments in all countries involved in the game.

Martin Crick
Coaching Manager



MATCH OFFICIALS

2011 year set the foundations for RLEF member nations to become self-sustaining in the development of their match officials (MO). Phase 2 of the match official strategy involved NGBs administering and delivering their own courses under the supervision of the RLEF. The Leonardo da Vinci-backed project was utilised to accommodate costs for the RLEF to supervise these courses.



Each course was reported on by the RLEF and NGBs were signed off to deliver rugby league referee courses as they deem necessary. The nations that delivered their first courses under the Technical Strategy included Serbia, Italy and Ireland. Each nation satisfied the RLEF of their suitability to administer and deliver MO courses with various strengths and weaknesses highlighted between each nation.

Serbia's SRLF had experience in delivering MO courses previously and their first under the Technical Strategy qualified nine match officials. Following this RL Ireland successfully delivered two courses in two days, in Dublin and Belfast, qualifying 21 officials in the process. The final Phase 2 course was conducted in Italy where FIRL delivered a course before the start of their domestic season qualifying nine officials. This leaves four nations included in Leonardo funding to complete phase two of the project before the end of May 2013. These are Czech Republic, Germany, Netherlands and Norway. Three of these nations have already confirmed dates of their courses and the final one is expected imminently.

The Czech Rugby League Association ran a training session for eight new MOs and was conducted under the watchful eye of Super League MO Warren Turley who was present to officiate during BARLA's tour of the nation.

Another newly qualified official, Germany's Uwe Jansen, refereed his first RLEF international. He took control of the European Bowl fixture between Hungary and Czech Republic and has been congratulated on his performance. Uwe was the second non-British or French referee to control an official RLEF international match.



Czech match officials take a break from their training session in Pardubice - July

Furthermore, 24 local officials were appointed as touch judges and fourth officials for the European Shield and will continue to be utilised for 2013. This system worked well with all the competing nations buying into the rationale and promoting their own officials and officiating standards. All drew praise from the centrally appointed referees and, significantly, all of the visiting teams were satisfied with the locals' performances.

Keeping in theme with the last two years, the RLEF will be aiming to appoint non-English or French MOs to referee the European Bowl in 2013.

The growing base of officials suitable to referee at this level reflects well on the development work conducted over recent years and highlights the value and success of implementing the Technical Strategy.

Steve Davis
Match Officials Manager

A handwritten signature in dark ink, appearing to read 'Steve Davis', located below the printed name and title.

MEDIA

It is fair to say that media awareness and its importance in most of the competing countries has increased during the year. Many are becoming more media savvy and realising that 'doing' is fine but informing people what, when and how is instrumental in raising and maintaining awareness and, therefore, support.



Some nations have become proactive, realising the need to preview and build up events and create a news flow but we are still working to ensure reportage immediately after the moment. With the rise of social networking and rolling news, instant is everything and there is a great deal of value in releases covering our diverse activities that emanate from the source.

Also, with the advent of twitter and the like, it has to be assumed that all news is instantaneous, if someone is sending messages from the game, a full report days after is of limited or no value and that now needs to be taken on board as part of individual nation's media strategy. It is all part of them building their organisations, and we are seeing progress in this as in many other areas of administration.

Conversely, if they have a major announcement to make, allowing it to filter out through social media first dilutes the impact. It is also vital that any major announcement is properly edited and accredited before release. In drawing up their circulation lists, nations need to be mindful of the need to differentiate to maintain maximum impact and exposure of their releases. The filters of what is of local or international interest and what constitutes a major story have not been fully set. We have got to the point with most where the need for news has been stressed and appreciated but we now need to follow that up with how it is managed.

There is still an element of hit and miss regarding co-ordination. There are times when there are three simultaneous stories released but then a week or so without communication. Ideally, advance notice of likely announcements offers the opportunity for a more comprehensive spread and impact the ability to build momentum. One of the successes towards the end of the year was the provision of a succinct 'state of the game' address undertaken by several nations. That provided good copy and a genuine appreciation of achievement.

Phil Caplan
Media Manager

A stylized, handwritten signature in black ink, appearing to be 'P. Caplan'.

GOVERNANCE

Reinforcing and emphasising best practice in the field of governance played a central role in 2012. RLEF officials attended two governance events hosted by the European Commission – one in London in February and one at the Sports Forum in Nicosia in May. The year also saw the launch of the *Governance Foundation Project*, a project jointly-funded by the RLEF and European Commission. The *Financial Accounts Model*, to aid financial efficiency and competency throughout the membership, which will be used for the first time in the 2012 Member Audit, was presented to and commended by the EC as an example of best practice.

BOARD OF DIRECTORS

2012 saw numerous changes at Board level. Hervé Guiraud's death in April was followed in the same month by Richard Lewis's resignation as chairman. French Federation president Nicolas Larrat replaced Hervé, while interim RFL chairman Maurice Watkins replaced Richard, temporarily until being voted to the post permanently by his fellow Directors on 24 July.

In addition, the two-year mandate for the two Member-elected Directors expired at August's annual council meeting. On 5 July the 14 RLEF Members were asked to nominate candidates by 20 July. Candidates were nominated by Jamaica, Scotland, Serbia, South Africa and Wales. Incumbents Nebojša Sretenović (Serbia) and Graeme Thompson (Scotland) were returned. Their two-year mandate is due to expire on the day of the 2014 annual council meeting.

The Board held five meetings throughout the year, the highest number since the formation of the Federation. These were:

- February 17 (Leeds)
- May 21 (electronically)
- July 24 (electronically)
- August 24 (London)
- October 20 (Lens)

COUNCIL

There was one change to the Council. South African Rugby League was accepted as a Full Member in February.



CONFERENCE | AGM

The tenth annual council meeting and third RLEF Conference were held on 24 August in London. Ghana, Greece and Poland were represented for the first time. The conference consisted of a workshop on the future technical direction of the RLEF that involved all delegates; a presentation illustrating the steps being taken following the 2011 recognition by the Commonwealth Games Federation, in particular in Ghana; a presentation and question and answer session on the fundamental financial structure of the RLEF and the RLIF; and a social media presentation.

Nations represented at the 2012 annual council meeting:

Czech Republic (CZRLA), England (RFL), France (FFRXIII), Germany (RLD), Ireland (RLI), Italy (FIRL), Jamaica (JRLA), Lebanon (LRLF), Norway (RLN), Scotland (SRL), Serbia (SRLF), Ukraine (UFRL), Wales (WRL), Latvia (LRL), Malta (MRL), Netherlands (NRLB), Greece (CHRLF), Hungary (HRLF), Morocco (FMRL) and Poland (PRL).

GOVERNANCE FOUNDATION PROJECT

The Governance Foundation Project was approved by the Sport Unit of the European Commission on 11 October. It was designed around the promotion of innovative approaches to strengthen the organisation of sport in Europe. Five Full Members of the RLEF will serve as Mentors to six smaller National Governing bodies, classified as Learners. The Rugby League European Federation (RLEF) is the lead partner and project co-ordinator. The Association of European Professional Football Leagues (EPFL) will provide football's perspective on European sport governance.

MENTORS

England (Rugby Football League), France (Fédération Française de Rugby à Treize), Ireland (Rugby League Ireland), Scotland (Scotland Rugby League), Wales (Wales Rugby League).

Right: The RFL's Matt Segal addresses European delegates at the GFP launch in Manchester – March.



LEARNERS

Czech Republic (Czech Rugby League Association), Italy (Federazione Italiana Rugby League), Germany (Rugby League Deutschland), Latvia (Latvia Rugby League), Netherlands (Nederlandse Rugby League Bond), Sweden (Swedish Rugby League).

On 18-20 March the opening seminar in Manchester launched the GFP, with a series of workshops and presentations delivered by the Sport & Recreation Alliance, the RFL and RLI. The second seminar took place in Geneva on 1-3 May with sessions delivered by the EPFL, the RFL, Swiss Football League and prominent sports lawyer Sylvia Schenk.

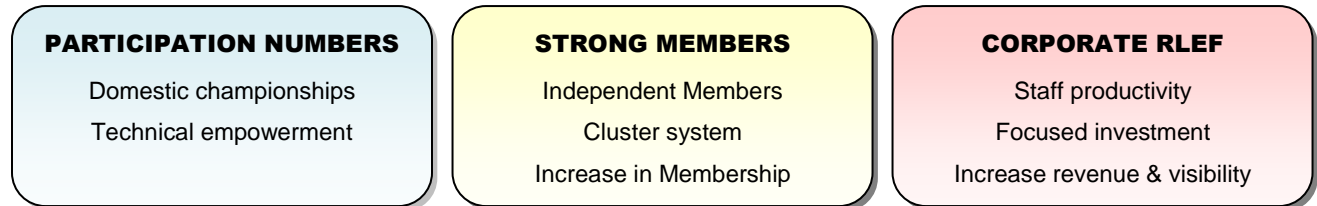
Throughout the year, numerous Mentor-Learner exchanges took place, with NRLB visiting the FFRXIII AGM (June); CZRLA visiting the RFL AGM (July), SRL visiting the LRL AGM, and RLI and FIRL making reciprocal visits to each other's AGMs (December). In addition, a number of technical sign-off visits were undertaken, with the moral and physical wellbeing of any sport's participants intrinsically linked to good governance.

During the project, the RLEF developed the Financial Accounts Model; a standardised management accounts system designed to assist NGBs adopt good practice in their financial governance and management. The system was submitted to the European Commission Sport Unit as an example of best practice produced by the Governance Foundation Project and introduced to the RLEF membership for the 2012 membership audit.

STRATEGY

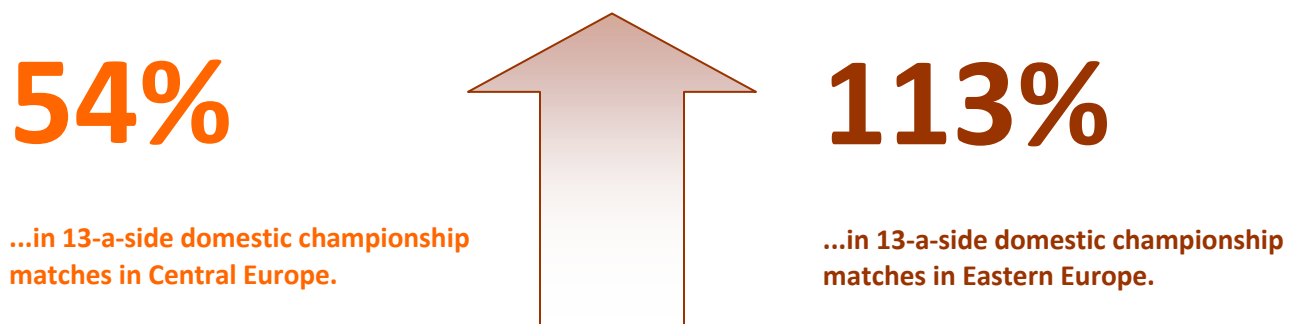
The second full year of the 2010-17 strategy produced a number of positive indicators of growth throughout the Key Focus Areas.

KEY FOCUS AREAS



PARTICIPATION NUMBERS

Significantly increasing participation numbers is the principal aim of the 2010-2017 RLEF strategy. Developing national championships is the main indicator to realising this strategic imperative, while the creation of technical departments, manned by trained and qualified local tutors, will support increasing participation numbers by providing competent coaches and match officials all of whom meet an RLEF standard.



Domestic championships

There has been more steady progress to report in this key area of operations in 2012. All Full Members recorded strong increases in the number of domestic league games, with Serbia and Scotland in particular making strong gains. In the Affiliate category, the Czech Republic, Russia and Ukraine all embedded their local championships and will nurture them to ensure stability and future growth.

MEMBER ACTIVITY

SENIOR [community | military | professional | student | wheelchair | women]

	TEAMS 2011	TEAMS 2012	MATCHES 2011	MATCHES 2012
CZECH REPUBLIC	5	9	14	31+ 1 ²
ENGLAND	850	885	8000	8200
FRANCE	133	136	1200	1240
GERMANY	5	6	6	7
IRELAND	20	27	42	65
ITALY	6	8	13	12
JAMAICA	12	13	43	51 + 3 ²
LEBANON	11	10	43	50
NORWAY	5	5	15	19
RUSSIA	13	18	18 + 1 ²	32 + 5 ²
SCOTLAND	14 ¹	21	52	43 + 3 ²
SERBIA	13	17	43 + 2 ²	62 + 2 ²
SOUTH AFRICA ³	-*	17	-	97+ 1 ²
UKRAINE	7	9	4 ²	30
WALES	24	23	176	185

*2010-11 statistics requested from previous SARL administration.

YOUTH [clubs | schools]

	TEAMS 2011	TEAMS 2012	MATCHES 2011	MATCHES 2012
CZECH REPUBLIC	3	2	-	-
ENGLAND	3001	3210	11000	11200
FRANCE	457	460	3600	3650
GERMANY	4	4	-	4
IRELAND	12	-	1	-
ITALY	-	-	-	-
JAMAICA	10	27	5 ²	18 + 12 ²
LEBANON ³	12	13	3 + 18 ²	4 + 7 ²
NORWAY	8	-	-	-
RUSSIA	46	40	10 ²	28 + 26 ²
SCOTLAND ³	22 ¹	39	43	49
SERBIA	5	9	11 + 2 ²	18 + 2 ²
SOUTH AFRICA	-	-	-	-
UKRAINE	10	10	12 + 5 ²	6 + 7 ²
WALES	192	239	550	577

REPRESENTATIVE MATCHES [national | regional | women | wheelchair | student]

Figures for 2012 include college and university teams.

	YOUTH 2011	YOUTH 2012	SENIOR 2011	SENIOR 2012
CZECH REPUBLIC	-	1	2	2
ENGLAND	10	14	14	27
FRANCE	6	5	8	9
GERMANY	2	3	5	5
IRELAND	-	-	10	17
ITALY	-	2	6	6
JAMAICA	-	-	3	3
LEBANON	2	8	8	8
NORWAY	-	-	3	2
RUSSIA	2	-	6	3
SCOTLAND	7	10	6	4
SERBIA	5	4	12	7
SOUTH AFRICA	-	-	4	-
UKRAINE	-	-	4	3
WALES	4	13	7	13

1. Figure differs from 2011 Annual Report - amended by NGB
2. Number of 9s tournament days
3. 2011/12 season

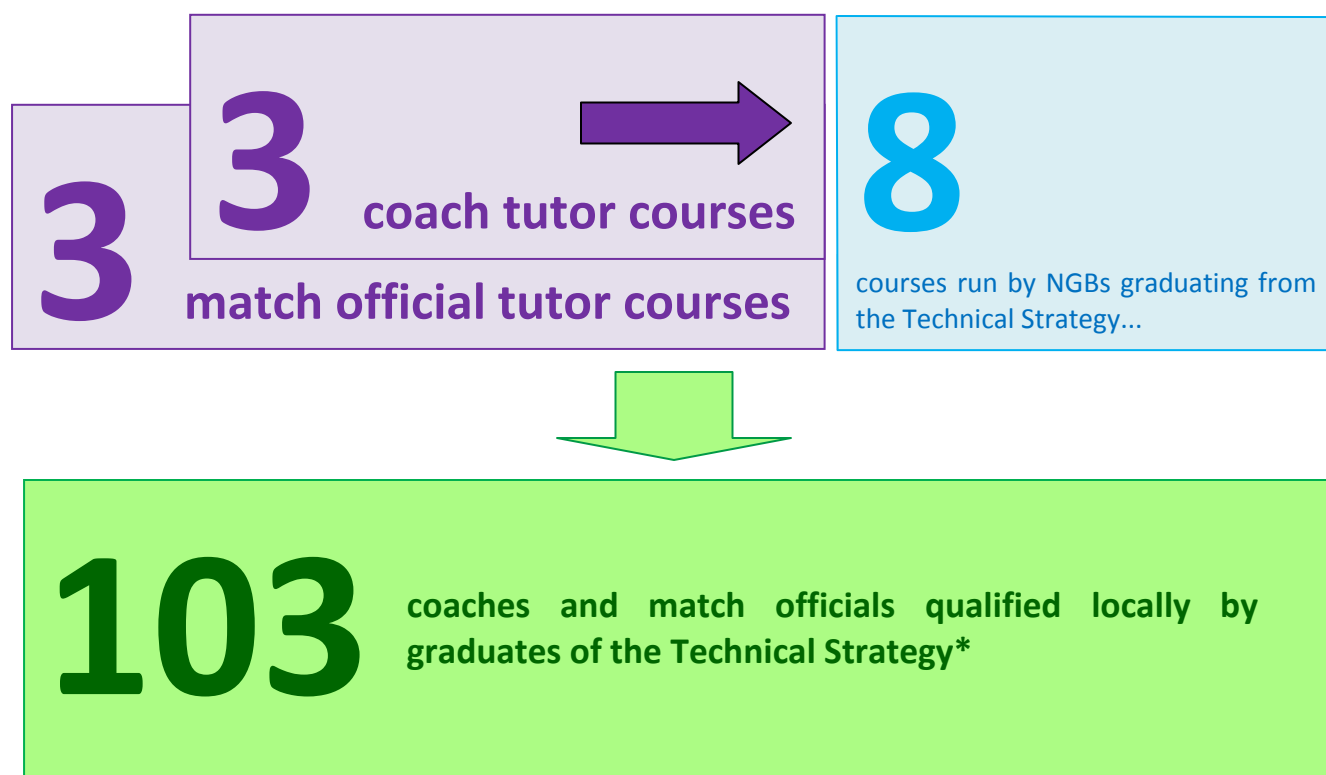
From left: Action from the Ukrainian and Czech championships, and from Scotland's youth league



Technical Strategy

The Technical Strategy was launched in 2011 and is due to be completed in 2013, when a new strategy will be written, once the effects and lessons of the initial plan have been analysed. The strategy's purpose is to train, qualify and support technical tutors throughout the RLEF's Membership, building the capacity of the NGBs and supporting their independence and increasing participation numbers by providing well trained and qualified personnel to a European standard, as well as increasing the number of Continental referees used to officiate European matches.

Rugby League Ireland hosted Western Europe Phase 2 in Dublin on 19-22 January; the Jamaican Rugby League Association hosted Atlantic Phase 2 in Spanish Town on 6-9 April; the Russian Association of Rugby League Clubs hosted Eastern Europe Phase 2 in Rostov-on-Don on 27-30 October. The year witnessed RLEF members graduating from the project and qualifying local technical staff.



*10 German, 5 Greek, 12 Italian, 54 Jamaican, 22 Serbian.

STRONG MEMBERS

As encouraging growth indicators are recorded throughout the RLEF membership, sustainability becomes an ever more pertinent watchword. Ephemeral growth is not helpful, and can even be harmful if projects that have shown initial promise collapse, but without stable, effective NGBs that possibility becomes more likely. Well administered, democratic, transparent, departmentalised associations are every bit as vital as more players, coaches, matches and referees and the RLEF has expanded its attention in this area in 2012.

Two decisions taken by the RLIF in 2012 contributed to sustainability and a well organised international sport. Firstly, the adoption of standardised membership regulations throughout both confederations and, secondly, an A\$25,000 annual administration grant provides guaranteed income, therefore increased financial stability and encourages proper budgeting.



Above: Serbian and Russian youth championships will help to keep players in the sport longer, aiding the sustainability of the clubs and therefore the governing bodies.

Those global changes, when coupled with the steps being taken by the RLEF to instil best practice in governance, will result in more confident members with greater capacity to develop the sport locally. Implementing the principles of good governance have been a major theme of the year [see page 15], a task that goes hand-in-hand with the federation's other activities to ensure sustainability i.e. the improvement of coaching and match officiating protects the moral and physical wellbeing of the players, thereby increasing the chance they'll remain in a sport they trust and feel comfortable being a part of.

Sustainability is of course a continuous aspiration, but the year has seen signs that indicate a stronger RLEF membership. The Ukrainian Federation of Rugby League received official recognition from the Ministry of Education, Science, Youth and Sport in March while the Jamaican Rugby League Association received recognition, and with it monthly funding, from the Sports Development Foundation, the government's sport funding agency.

The Serbian and Lebanese federations received Full Membership of the RLIF in May – the first federations to achieve that mark from nations that could be characterised as non-traditional rugby territories - and both received meaningful increases in their government funding. Both continue to perform key strategic roles in their regions, providing both example and practical support to their neighbours.

“We have made history. We have waited for this moment for so long, and it is a major victory for our sport and all of European rugby league.”

- Artur Martyrosyan, UFRL vice president, comments on government recognition

The RLEF's annual membership audit is another important element of the federation's governance overhaul, with more focus than ever before on improving members' transparency, financial acumen and accounting practice. This latter was addressed through the creation of the Financial Account Model, an interlinking system of budget, income statement and balance sheet. Through these steps the RLEF is able to present member organisations that can show adherence to record-keeping, financial transparency and clearly defined governance – all vital areas when it comes to achieving government recognition, attracting commercial partners or obtaining public funding.

Cluster system

With 2012 seeing the creation of the Asia-Pacific Rugby League Confederation as the RLIF's second Associate Member alongside the RLEF, the notion of regional devolution continues to be an important trend in world rugby league.

From right: Canada and Jamaica face off in Toronto – July; Serbia and Germany U16 clash in Heidelberg – August



Serbia accelerated its exemplary regional leadership role through support of the budding Hungarian operation with a club tour in March; collaboration with associates to create two clubs in Bosnia and Herzegovina, which should lead to the formation of a federation in 2013; and a coaching course in Greece.

Transnational youth exchanges increased, with the highest number yet recorded, with three MENA events hosted by Lebanon, a tour to Italy by Germany U18, a tour to Germany by Serbia U16 and a three-team U18 festival in Serbia.

Jamaica and Canada played for the second consecutive year, with Canada also completing a home and away series with the USA. Jamaica's increasing capacity also led to a number of new Caribbean nations showing interest in starting rugby league, with Guyana, Antigua and St Lucia all in talks with the JRLA and RLEF.

The RLEF's Membership at the end of 2012 is as follows:

FULL



AFFILIATE



OBSERVER

Canada Rugby League, Dansk Rugby League Forbund, Fédération Marocaine de Rugby League, Latvian Rugby League, Malta Rugby League, Nederlandse Rugby League Bond, Svenska Rugby League Förening, Trinidad & Tobago Rugby League

UNRANKED

Association of Catalunya Rugby League, Bosnia & Herzegovina, Greece, Hungary, Poland, Saudi Arabia, United Arab Emirates

CORPORATE ORGANISATION

The RLEF is committed to becoming a more efficient and productive organisation at every level of the business.

Staff

The principal staffing change saw Central Europe Regional Director Jovan Vujosevic promoted to assume additional control of the Eastern Europe region. Jovan's first year in the job has seen participation increase markedly and communications between the RLEF and Eastern Europe vastly improved. A thorough report on Russian rugby league's current health, compiled over several months, gave the RLEF the most thorough picture of this strategically important country it has yet had and the ARLK is now operating with greater assuredness.

Practical, frontline interaction with Hungary, Bosnia & Herzegovina and Greece continued under Jovan's leadership while discussions with Poland and Romania continue to see those countries progressing towards RLEF affiliation.

Right: The RLEF staff meets at Wigan RLFC during a two-day governance seminar - March



Thanks to the effort applied in 2012, 2013 should see a number of new regional nations officially recognised.

The second staff change saw Sylvester Wellington hired as Ghana Manager in June after a three-stage interview process. This historic appointment follows the sport's Commonwealth Games Federation

recognition and Sylvester has been charged with implementing a structure in Ghana and obtaining a government federation. His, and Ghana rugby league's example, will provide the sport with an exciting new territory in which to set down long-lasting roots. Sylvester will be assisted by part-time officer Alfred Attieku, who is responsible for co-ordinating the rugby league affairs of University of Ghana, the sport's principal partner in the West African country [page 27].

Revenue | visibility

Revenue exceeded the budgeted forecast by dint of the investment in the West African rugby league project from sponsor Sara Giwa-McNeil, a Ghanaian national, and UK Sport International. More detail on the financial status of the federation can be viewed in the financial report [page 36].

Alitalia saw through the second of its two-year partnership of the European Cup, and the company received exposure not only through the tournament but on three live BBC Autumn International broadcasts.

Activity on www.rlef.eu.com increased while Director Christen Farmer drafted a social media strategy, covering Twitter and Facebook. The possibility to stream RLEF official matches is also under investigation.

Strategic partnerships

The RLEF's ability to increase its activity is due to the fruitful partnerships it has forged with some key stakeholders. Chief among these is the European Commission, which is partner with the RLEF in two current programmes, described above, which are due for completion in the summer of 2013. The Governance Foundation Project [page 16] and the Leonardo da Vinci-funded Technical Foundation Project have enabled the RLEF to implement a series of improvements in these fundamental sectors. Both projects underpin the RLEF's vision and values, specifically through technical empowerment and the creation of stronger members, and deepen the federation's European dimension.

UK Sport International, which began its relations with the RLEF through a small £3400 grant to the JRLA in 2011, invested £20,000 into the West Africa project in 2012 and has indicated it intends to support other territories in 2013, including the Caribbean and West Africa. Strategically in line with the sport's pledge towards the CGF, this partnership assumes even greater significance as the sport rolls out the greatest expansion from its traditional boundaries in its 117-year history.



Clare Barrell and Danny Kazandjian meet Dr Aggra, director general of the Ghana Sports Authority

African development

2012 saw the first manifestation of Commonwealth Games Federation recognition, secured in 2011. In its application, the RLIF pledged to begin development programmes in two principal target areas, the Caribbean and sub-Saharan Africa.

Danny Kazandjian visited Ghana in April with UK Sport International, holding meetings with the Director General of the National Sports Authority, education ministry officials and various other potential stakeholders, such as the University of Ghana. The country was ideal to serve as rugby league's pilot West African project, with its stable political scene, burgeoning economy, existing association with rugby league through London-based sponsor Sara Giwa-McNeil and the established presence of UK Sport International development programmes.

Danny and UKSI official Clare Barrell conducted interviews with seven long-listed candidates from 12 applicants, then three short-listed applicants, from whom Sylvester Wellington was offered the job of full-time national development manager. Sylvester then spent a month in London working with the RLEF, London Skolars and London Broncos to further his rugby league education and returned to organise the technical visit led by Martin Crick that resulted in 28 locals receiving their Level 1 Coaching Course – including three Nigerians - and an introduction to rugby league match officiating.

“UK Sport is an enthusiastic supporter of the RLEF vision of introducing rugby league into Ghana which is an ideal entry point for the wider expansion of this great sport into West Africa. UK Sport aims to help raise the international profile of British sport worldwide so this initiative is a good fit for us. We are committed to providing the RLEF with the strategic and technical support they need to ensure that a quality rugby league development programme takes root and continues to evolve in Ghana.”

- Debbie Lye, Director International Development UK Sport

The RLEF also opened a line of communication with the Sierra Leone National Olympic Committee and with local partners, with the intention of commencing operations in Freetown in 2013. In other parts of sub-Saharan Africa the RLEF investigated the opportunities to partner with existing community programmes, inserting rugby league into school partnerships in Zambia and Ethiopia, with the latter holding its first rugby league tournament in November.

OFFICIAL COMPETITIONS

The RLEF's Members and affiliated nations played more international matches in 2012 than in any other year. The exciting new international framework, devised to provide stability and the chance for NGBs to plan years in advance, became a reality with the launch of the biennial European Shield, which in its first year proved to be one of the most exciting European competitions in RLEF history.

84

**MATCHES PLAYED
INVOLVING NATIONAL
REPRESENTATIVE TEAMS**

The popularity and feasibility of regionally organised transnational exchanges also continued, with certain nations fielding youth teams for the first time and a growing member-wide confidence in organising and executing fixtures at governing body-to-governing body level.

ALITALIA EUROPEAN CUP

England Knights demonstrated the strength available to Steve McNamara with two comfortable victories. For Scotland and Ireland the competition proved a valuable exercise 12 months prior to the world cup.



	W	L	PF	PA	+/-	Pts
ENG K.	2	0	118	28	90	4
IRE	1	1	34	74	-40	2
SCO	0	2	42	92	-50	0

14 OCTOBER	SCO 18-30 IRE	Edinburgh
19 OCTOBER	IRE 4-56 ENG K.	Belfast
28 OCTOBER	SCO 24-62 ENG K.	Edinburgh

EUROPEAN SHIELD



The European Shield began its reformation as a four-team, biennial championship, replacing the three-team round robin format. The six fixtures will be reversed in 2013.



	W	L	PF	PA	+/-	Pts
RUS	3	0	85	64	21	6
ITA	1	2	108	66	42	2
SER	1	2	68	64	4	2
GER	1	2	61	128	-67	2

12 MAY **GER 25-24 SER** Heidelberg

19 MAY **GER 26-32 RUS** Heidelberg

9 JUN **SER 24-18 ITA** Belgrade

7 JUL **ITA 72-10 GER** Piacenza

8 SEP **RUS 32-18 ITA** Naro-Fominsk

22 SEP **RUS 21-20 SER** Naro-Fominsk

EUROPEAN BOWL



The Czech Republic retained the European Bowl, beating Hungary XIII for the second time in as many years, this time on home soil. This was the last Bowl of its kind before the competition is linked to the biennial European Shield.



	W	L	PF	PA	+/-	Pts
CZECH REP.	1	0	42	16	26	2
HUNGARY XIII	0	1	16	42	-26	0

14 JUL **CZE 42-16 HUN XIII** Vrchlabi

AMATEUR FOUR NATIONS

After a decade of Welsh domination, the English Lions, made up of the country's best amateur players, replaced the development Lionhearts, a move that reflected the improving standards of the participating nations.



	W	L	PF	PA	+/-	Pts
ENG LIONS	3	0	138	22	116	6
SCOTLAND A	1	1	50	64	-14	3
WALES A	1	2	52	118	-66	2
IRELAND A	0	2	26	62	-36	1

23 JUN	IRE – SCO*	Belfast
23 JUN	ENG 56-8 WAL	Hull
21 JUL	WAL 28-26 IRE	Swansea
22 JUL	SCO 14-48 ENG	Falkirk
11 AUG	IRE 0-34 ENG	Bruff
11 AUG	SCO 36-16 WAL	Falkirk

*Match abandoned due to waterlogged pitch

AFFILIATED COMPETITIONS

AUTUMN INTERNATIONAL SERIES

England easily won their three matches in the last international tournament before the 2013 Rugby League World Cup. France took the sport to the northern mining city of Lens for the first time.



	W	L	PF	PA	+/-	Pts
ENGLAND	2	0	124	18	106	4
FRANCE	1	1	26	50	-24	2
WALES	0	2	18	100	-82	0

20 OCT FRA 20-6 WAL Lens

27 OCT WAL 12-80 ENG Wrexham

3 NOV ENG 44-6 FRA Hull

FINAL

11 NOV ENG 48-4 FRA Salford

NORDIC CUP



The third edition of the Nordic Cup between one of the RLEF's youngest regions saw Norway XIII re-assert itself as the strongest of the three Scandinavian teams.



	W	L	PF	PA	+/-	Pts
NORWAY XIII	2	0	72	16	56	4
DENMARK XIII	0	1	128	44	84	2
SWEDEN XIII	0	2	18	158	-140	0

28 APR DEN 122-8 SWE Copenhagen

28 JUL SWE 10-36 NOR Stockholm

4 AUG NOR 36-6 DEN Oslo

MENA CHAMPIONSHIP

Bureaucratic problems endangered the MENA Championship series between Lebanon and Morocco XIII but following intervention from a Member of the European Parliament one match of the scheduled two was able to proceed, with the Moroccans putting up an impressive resistance against Lebanon's under-20s.



	W	L	PF	PA	+/-	Pts
LEB U20	1	0	36	24	12	2
MOR XIII	0	1	24	36	-12	0

22 MAR MOR XIII 24-36 LEB U20 Berrechid

MENA UNDER-16s CHAMPIONSHIP

Saudi Schools Select registered its most convincing victory yet in a series that has now been played for four successive years. The Lebanese Junior Cedars were no match for the polyglot Saudi side.



	W	L	PF	PA	+/-	Pts
SAUDI RL SEL.	2	0	68	8	60	4
LEBANON	0	2	8	68	-60	2

22 MARCH LEB 8-32 KSA Beirut
24 MARCH LEB 0 - 36 KSA Beirut

OTHER INTERNATIONALS

Below is a list of all internationals with at least one RLEF Member national team participating. This year's annual report includes student level internationals for the first time.

SENIOR INTERNATIONALS

DATE	FIXTURE	LEVEL	VENUE
17 MAR	USA 38-20 IRELAND A	SENIOR	Philadelphia
9 JUN	MALTA 24-12 DENMARK	SENIOR	Hamrun
11 JUN	JAMAICA 10-54 BARLA U23	SENIOR	Kingston
15 JUN	ENGLAND 48-0 FRANCE	WOMEN	Bradford
16 JUN	ENG KNIGHTS 62-4 IRELAND	SENIOR	St Helens
16 JUN	WALES 16-28 FRANCE	SENIOR	Wrexham
16 JUN	FRANCE FEDERALE 42-26 SERBIA	SENIOR	Lyon
16 JUN	ENGLAND 18-10 EXILES	SENIOR	St Helens
16 JUN	JAMAICA 28-56 BARLA U23	SENIOR	Spanish Town
4 JUL	ENGLAND 20-32 EXILES	SENIOR	Huddersfield
7 JUL	WALES 20-6 SCOTLAND	WHEELCHAIR	Hull
7 JUL	IRISH REP 12-34 ENGLAND A	WHEELCHAIR	Hull
7 JUL	WALES 44-4 IRISH REP	WHEELCHAIR	Hull
8 JUL	ENGLAND A 50-SCOTLAND	WHEELCHAIR	Hull
8 JUL	IRISH REP. 14-8 SCOTLAND	WHEELCHAIR	Hull
8 JUL	ENGLAND A 34-0 WALES	WHEELCHAIR	Hull
21 JUL	CANADA 18-12 JAMAICA	SENIOR	Toronto
11 AUG	CANADA 36-18 LEBANON	SENIOR	Toronto
27 AUG	ENGLAND 22-34 FRANCE	WHEELCHAIR	Medway
8 SEP	CANADA 24-28 USA	SENIOR	Toronto
23 SEP	USA 36-14 CANADA	SENIOR	Westport
29 SEP	DENMARK XIII 12-74 MALTA	SENIOR	Copenhagen
6 OCT	CANADA 4-68 ENGLISH LIONS	SENIOR	Toronto
7 OCT	COOK ISLANDS 28-24 LEBANON	SENIOR	Sydney

YOUTH INTERNATIONALS

DATE	FIXTURE	LEVEL	VENUE
24 FEB	LEBANON 22-22 SAUDI SCHOOLS	U18	Beirut
4 APR	ENGLAND 30-4 WALES	U16	Sheffield
6 APR	FRANCE 28-22 ENGLAND	U16	Cahors
11 APR	FRANCE 31-10 ENGLAND	U16	Albi
15 JUN	ENGLAND 38-18 FRANCE	U18	Bradford
28 JUN	CZECH REPUBLIC U20 0-68 BARLA U18	YOUTH	Prague
7 JUL	ITALY 32-16 GERMANY	U18	Piacenza
21 JUL	SCOTLAND U18 10-44 ENG COLLEGES U19	YOUTH	Falkirk
28 JUL	LEBANON U20 0-40 ENG LIONS U18	YOUTH	Beirut
2 AUG	LEBANON U20 0-56 ENG LIONS U18	YOUTH	Beirut
5 AUG	AUSTRALIA 41-10 ENGLAND	U18	Canberra
11 AUG	AUSTRALIA 40-14 ENGLAND	U18	Wynnum
17 AUG	ENGLISH MIDLANDS 46-4 LEBANON	U18	Belgrade
18 AUG	SERBIA 46-4 LEBANON	U18	Belgrade
18 AUG	ENG COLLEGES U19 40-14 SCOTLAND U18	YOUTH	Wath Brow
19 AUG	SERBIA 0-30 ENGLISH MIDLANDS	U18	Belgrade
31 AUG	GERMANY 14-8 SERBIA	U16	Heidelberg
2 SEP	GERMANY 10-4 SERBIA	U16	Heidelberg
3 NOV	WALES 46-28 SCOTLAND	U18	Wrexham
10 NOV	ENG LIONS 24-30 WALES	U18	Leigh
19 NOV	FRANCE U19 26-10 AUS INST. OF SPORT U18	YOUTH	Salon de Provence
22 NOV	FRANCE 12-16 AUS INST. OF SPORT	U18	Toulouse
28 NOV	WALES 12-52 AUS INST. OF SPORT	U18	Neath

STUDENT INTERNATIONALS

DATE	FIXTURE	LEVEL	VENUE
23 MAY	ENG STUDENTS 32-30 ARMY	INTERNATIONAL	Derby
1 JUN	AQUITAINE 8-6 ENG. WOMEN	STUDENT	Biganos
3 JUN	FRANCE FEMENIN 40-9 ENG. WOMEN	STUDENT	La Reole
11 JUN	WALES 74-4 SCOTLAND	STUDENT	Wrexham
11 JUN	ENGLAND 58-12 IRELAND	STUDENT	Wrexham
13 JUN	WALES 64-4 IRELAND	STUDENT	Wrexham
13 JUN	ENGLAND 50-10 SCOTLAND	STUDENT	Wrexham
15 JUN	WALES 20-18 ENGLAND	STUDENT	Wrexham
15 JUN	IRELAND 24-36 SCOTLAND	STUDENT	Wrexham
2 JUL	CZECH STUDENTS 0-98 BARLA YOUTH	INTERNATIONAL	Prague
20 OCT	ENG. WOMEN 36-6 ENG. TEACHERS	STUDENT	Leeds
27 OCT	COMBINED SERVICES 18-8 ENG. WOMEN	INTERNATIONAL	RAF Cranwell

FINANCIAL REPORT

In 2012 there was a continued focus on driving Grant and Sponsorship funded programmes, supporting the development of the member nations.

The RLIF Grant fell to £137,547 (2011: £144,189) due to a general reduction, this is expected to further decrease in 2013 as the RLIF makes payments direct to full members rather than through the RLEF. The financial support from the RFL remained constant and was again complemented by officer time across many disciplines. Additional to the sponsorship income from Alitalia, further revenues were received in support of the West Africa programme.

Grants received from the year were £63,479 (2011: £21,455) as the EU increased their support and UK Sport International supported the West Africa programme.

Grants to nations increased to £28,663 (2011: £13,300), this is likely to be reversed in 2013 as grants from the RLIF replace some support through the RLEF. Direct activity costs rose to £88,944 (2011: £58,847), through programmes utilising grants and sponsorship.

Administration costs for 2012 were £144,923 (2010: £173,055), due to staff restructuring and general cost control measures implemented for the first time.

Income Statement
as at 31 Dec 2012

	2012 Forecast £	2011 £
<u>Income</u>		
Members Fees	4,855	2,100
RFL & RLIF Contribution	177,657	200,642
Grants	63,479	21,455
Commercial Income	16,923	20,944
Turnover	262,914	245,142
<u>Expenditure</u>		
Grants	28,663	13,300
Activity	88,944	58,787
Administration	144,923	173,055
Taxation	77	-
Total Expenditure	262,608	245,142

THE RLEF BOARD

MAURICE WATKINS CBE – CHAIRMAN

Maurice, the interim RFL chair, became RLEF chairman in August 2012. He is a Joint Senior Partner in a prominent law firm, a former chair of the British Association for Sport and Law, and is a former Director of Manchester United.



NICOLAS LARRAT – DIRECTOR*

Nicolas Larrat joined the RLEF as vice-chairman upon assuming the presidency of the FFRXIII in 2004. Prior to that Nicolas, a lawyer by profession, was the vice-president from 2001. He comes from good *treiziste* stock, having played loose-forward for Toulouse for eight years.



CHRISTEN FARMER - DIRECTOR

Chris comes to the RLEF board with over 20 years of international experience in sportswear brand distribution and strategic corporate communications in Europe, the US, and the Far East. Chris is currently president of the communications firm MACH IV Consulting based in Belgrade, Serbia.



RICHARD GRAHAM - DIRECTOR

Following a 25-year career in sport, including stints as chief executive of the Professional Squash Association and Parallel Media Group plc, Richard joined the RLEF Board in July 2011. Currently, he is the Executive Director of Impact Sports Recruitment, Special Executive Advisor to Sporting Equals and Chairman of London Swimming.



NEBOJŠA SRETENović - DIRECTOR

The first ever Serbian national team captain, Nebojša Sretenović played a pivotal role in the formation of the Serbian rugby league in 2001 and has been an ever-present member of the SRLF Board, serving as president from 2009-11. In 2010 the RLEF Council elected Nebojša to the RLEF Board.

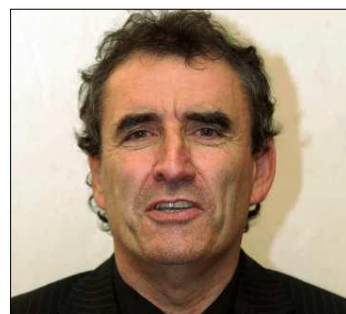


GRAEME THOMPSON - DIRECTOR

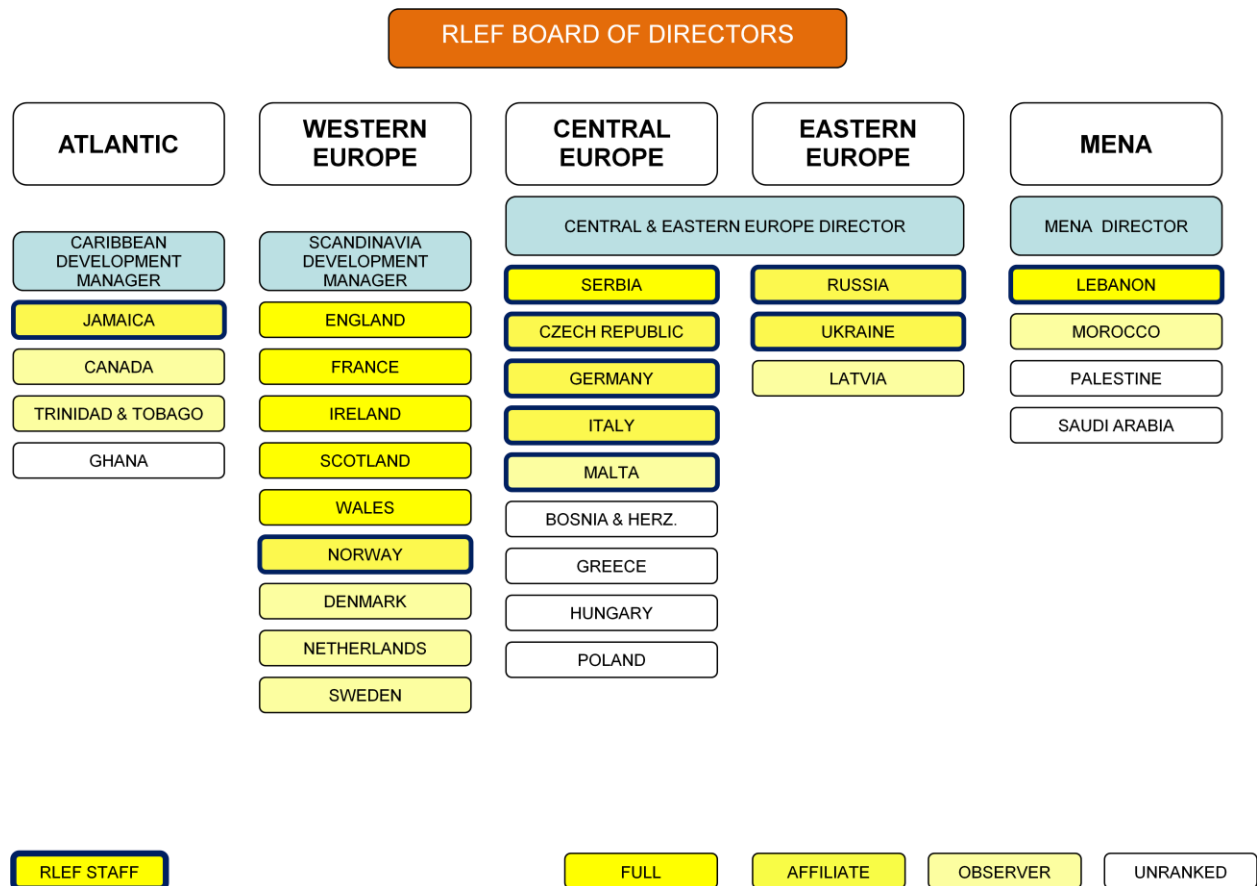
The RFL's former Performance Director and England team manager during the 2008 Rugby League World Cup, ex-Scotland international Graeme was elected to the RLEF Board in 2010. He is currently a performance advisor with UK Sport.



*Nicolas Larrat rejoined the RLEF Board in 2012 following the passing of compatriot Hervé Guiraud (right), who lost his battle with illness in April. The Secretary General of the French Federation and a former France international, Hervé was a board member of both the Rugby League European Federation and Rugby League International Federation and was a significant figure in the French game.



APPENDIX 1: RLEF ORGANISATION



APPENDIX 2: DOMESTIC CHAMPIONSHIPS

In 2012 [or 2011/12 season] the following NGBs ran domestic championships:

MEMBER	LEVEL	Sr. LEAGUE [teams] CHAMPIONS	2 ND DIVISION* [teams]	Jr. LEAGUE [teams]
ENGLAND	FULL	Engage Super League [14] Leeds Rhinos	Cooperative Ch. [10] Cooperative Ch. 1 [10] Multiple amateur comps	Multiple
FRANCE	FULL	ELITE 1 [9] FC Lézignan	ELITE 2 [11] National Division [21] Fédérale [25]	Multiple
IRELAND	FULL	Ulster [9] Leinster [7] Munster [5] Country Cowboys	-	-
LEBANON	FULL	Bank of Beirut RL Ch. [5] Tripoli City RLFC	RL Shield [5]	U14 [5] U16 [8]
SCOTLAND	FULL	RL Conference [10] Edinburgh Eagles	University [4]	U15 [7] U17 [6]
SERBIA	FULL	Championship [4] Dorćol Spiders	Second Division [6] University [5]	U18 [6]
SOUTH AFRICA	FULL	Rhino Cup [6] UP Tuks RL	Protea Cup [11]	-
WALES	FULL	Premier Div. [6] Bridgend Blue Bulls	Championship [4]	4 divisions
CZECH R.	AFFILIATE	Championship [4] Lokomotiva Beroun	Second Division [5]	-
GERMANY	AFFILIATE	Bundesliga [5] Baden Pirates	-	U14 [2] U16 [2]
ITALY	AFFILIATE	North-West Ch. [4] North-East Ch. [4] XIII Del Ducato Piacenza	-	-
JAMAICA	AFFILIATE	Championship [8] Vauxhall Vultures	Colleges [5]	U16 [12] U19 [12]
NORWAY	AFFILIATE	Premiership [8] Oslo Capitals	-	-

RUSSIA	AFFILIATE	Centre Ch. [5] Vereya Bears RLFC	South Ch. [4]	16 clubs
UKRAINE	AFFILIATE	Championship [4] Legion XIII	Second Division [5]	U16 [5] U14 [5]
CANADA	OBSERVER	British Columbia Ch. [5] Surrey Beavers	-	-
MALTA	OBSERVER	Championship [4] Sliema Stompers	-	-

- * Minimum criterion for Full Members is four second grade or U21 or student teams. “Clubs” in this section can include university or college teams as well as private sports clubs.