

RUGBY LEAGUE EUROPEAN FEDERATION

ANNUAL REPORT|2013|





Serbia takes on Russia in the European Shield in Belgrade, Serbia - May



French Federation staff delivering a Level One coaching course in Casablanca, Morocco - April

CONTENTS

MESSAGE FROM THE CHAIR	3
RLEF PROFILE & VALUES	6
GENERAL MANAGER	7
COACHING MANAGER	10
MATCH OFFICIALS MANAGER	12
MEDIA MANAGER	14
GOVERNANCE	15
STRATEGY	19
OFFICIAL COMPETITIONS	27
AFFILIATED COMPETITIONS	29
OTHER INTERNATIONALS	31
FINANCIAL REPORT	35
THE BOARD	39
APPENDIX1: ORGANISATION	41
APPENDIX 2: DOMESTIC CH.	42

A MESSAGE FROM THE CHAIR

Two thousand and thirteen marked my first full year as chairman of the Rugby League European Federation, and it was my distinct pleasure to be in post during the year of the excellent Rugby League World Cup, which exceeded pre-tournament expectations in most categories and excited the passions of so many people.

That excitement stemmed not only from the on-field action, but also the realisation that the sport is on the threshold of one of the most significant periods in its international history – a period in which the RLEF is positioned to play a major part.

The RLEF's fundamental role – to develop the sport in Europe and the surrounding territories that temporarily fall under our jurisdiction – has never been more important than it is now, with rugby league keen to broaden its global footprint while understanding the need to do so in a sustainable and efficient manner.

Our members remain the heart of the Federation and I am pleased to report a strengthening, maturing corps of National Governing Bodies. Russia, Jamaica and Ukraine were elevated to Full Membership early in the year, and received the equivalent status with the Rugby League International Federation in October.



It is significant to note that, following Lebanon and Serbia's elevation in 2012, we are now starting to see non-traditional rugby countries reaching this level of maturity for the first time. Beneath this trio, three new Affiliate Members and five new Observers were admitted to our growing ranks. All of our members are now required to fulfil enhanced membership protocols as we continue to focus on good governance and for the first time in the Federation's history all newly recognised nations must apply as registered legal entities under their local laws.

The RLEF Board fully understands the need to remain in touch with its members and consequently took it upon itself to enter into a dialogue with all our members. Member Elected Directors Graeme Thompson and Nebojsa Sretenovic led an eight month board-to-board level consultation aimed at gauging how members viewed their position within the RLEF and how we can best address their needs. This consultative approach was applied to our draft international calendar, which was still a work in progress by year's end due largely to the rapid changes at international level following the World Cup and the English Federation's own re-positioning within the United Kingdom. The theme, though, of an involved and animated membership corps, remains central to the RLEF Board's philosophy.

Another major part of our work is cultivating our European dimension; fuelling our drive to become an increasingly European organisation, with European perspective, vision and leadership. Having completed our first European Commission-backed project this year, the European Union's executive arm endorsed our latest application in October, highlighting the value the Commission places in our education programmes and how they see them contributing to the number of EU citizens playing an active role in an organised and growing sport.

As a board of directors, we have emphasised the importance of maximising our relations with the Commission as well as increasing commercial revenue and consequently have appointed a new non-executive Director, Paul Nicholson, who joined our Board in December. The appointment follows the departure of Independent Director Christen Farmer, who stepped down in 2013 due to time constraints. I would like to take this opportunity to thank Christen for his contribution since his appointment in July 2011. French Federation president Carlos Zalduendo has also completed his first full year as an RLEF director and was elected vice president in February. Carlos values the sport's European dimension highly and the role of France, as our most senior continental member, as a leader in the RLEF cannot be understated.

Carlos was also asked to represent the RLEF on the RLIF's executive committee, alongside Graeme Thompson, and, even setting the World Cup to one side, they have certainly been busy this year. The RLEF has been fully involved in major strategic initiatives under the RLIF's aegis, including rugby league's bid for membership of SportAccord, the global governing body for Olympic and non-Olympic international federations; and our continuing and strengthening relationship with the Commonwealth Games Federation, which has existed in a formal sense since November 2011.

On the rugby pitch, I would like to congratulate Russia and the Ukraine for their respective triumphs in the European Shield and Bowl. The former drew to a close after two years of competition that produced some excellent matches and, equally importantly, demanded a high level of logistical and administrative management, which was one of the added value principles set out in the re-formatted competition's

rationale. Ukraine has become the first team formally promoted from one European international competition to the level above, and I wish them luck in the 2014-15 European Shield.

I would like to take this opportunity to pay tribute to Niel Wood, who joined Salford Red Devils mid-way through the year. Niel, as the RFL's Director of European Development, was a strong proponent of the RLEF and his somewhat unheralded contribution to the growth of the Federation and its members deserves to be recognised fully.

Finally, as we look forward to the new year, a year which will mark the halfway point of the RLEF's eight-year strategy, we should all be encouraged about the state of the sport in Europe and beyond. Unequivocally, more nations and more people are playing the sport, and our mission is to ensure that our members' governments recognise their national governing rugby league association or federation. Following the World Cup, the RLEF is in the unprecedented position of being able to plan years ahead, and faced with that reality I am convinced that the RLEF will continue to develop and grow, both centrally and through its constituent parts, to the greater benefit of the sport.

Maurice Watkins CBE
Chairman

A handwritten signature in cursive script, reading "Maurice Watkins".

RLEF PROFILE & VALUES

The Rugby League European Federation's statutory objectives are to foster, develop, extend, govern and administer the sport of rugby league throughout Europe. Its rapid growth since 2003 has impelled the extension of that remit to additional, non-European regions. In 2013, the RLEF administered national governing bodies [NGBs] in Africa, the Middle East, the Caribbean and North America, in addition to its diverse European responsibilities.

EMPOWERMENT

Enhance the growth of rugby league among members, in all facets, through a policy of empowerment

Dutch tutors deliver a Level 1 Coaching Course in Rotterdam – April



DYNAMISM

The RLEF recognised as a dynamic, results-based leader

Italy and Serbia under-18s clash in Este - July



CULTURE

Cultivate rugby league culture among member nations, making the sport a habitual part of participants' lives

Action from the Pardubice 9s, Czech Republic - August



GENERAL MANAGER'S REPORT

With the outstanding 2013 Rugby League World Cup grabbing the global headlines, the RLEF's fundamental governance and development work can be viewed in its context of contributing to a maturing sport in the many countries where it is still relatively young. Having completed the third full year of the 2010-17 strategy, which was adopted in August 2010, the RLEF has effectively remained true to the tenets of that plan, with



participation, governance and a productive central body at the forefront of our work. However, the year also marked a profound shift in the Federation's position as the sport's regional confederation, one that in my view will be seen in years to come as the point at which the RLEF's European dimension truly began to take shape.



Left to right: Russia won the European Shield with five wins from six matches; Ukraine were crowned Bowl champions having beaten Norway and the Czech Republic; while Holland and Belgium played a Test Match using the new RLIF match sanctioning protocols

There are a number of reasons why I suggest this: firstly, for the first time, 2013 saw continental technical tutors trained by the RLEF graduating and beginning to transfer knowledge to their compatriots; secondly, more European governing bodies received membership upgrades, showing a strengthening constituent group with increasing capacity; thirdly, the European Commission accepted our *European Leadership Devolution Project* – one of 14 projects accepted from 135 applications - which is aimed at reinforcing that transfer of knowledge which commenced in 2011, exporting it from Britain and France to the new wave of Continental European NGBs whose competence and operational footprint expands annually; and fourthly and finally, the decision of the Rugby Football League to change its historic donor relationship with the Home Nations NGBs means that Ireland, Scotland and Wales will work more collaboratively than ever with the RLEF, with the need for a consultative approach imperative if big projects that will benefit all are to succeed.

One of reasons the Commission accepted the ELDP was that it could see clear results of our previous projects. Countries like the Netherlands, the Czech Republic and Ireland are all producing home-grown leaders as a result of graduating from the 2011-13 *Governance Foundation Project* and are now assuming a more senior role as new countries take up rugby league.

At the end of the ELDP our Federation will be populated by a more confident and competent group of national associations, whose technical staff are well trained and who have received between two and four years of on-the-job experience; their governing boards will have benefitted from the more stringent governance requirements introduced by the RLEF, including a standardised financial management mechanism; and, equally importantly, a transnational culture of support and collaboration will be stronger than ever. It also marks the fourth successful application for EU funds from five attempts, and signifies the RLEF as a reputable and reliable partner to prospective donors for all future funding opportunities.

Of course, the RLEF is currently not just the governing body for Europe, and much of the above can be applied to its non-European NGBs as well, especially the importance of strong technical and governance leaders. For the sport as a whole, the continuing maturity of our Full Members means strategic outposts in important emerging markets: Jamaica and South Africa can advance rugby league's Commonwealth ambitions; Lebanon, whose federation has faced an extremely difficult year under the strain of Syria's civil war and the violent ripples that have been felt in Beirut and Tripoli, is re-structuring and is well placed to lead the drive for more Middle Eastern involvement.

Coach Alex Winstanley presents Ghanaian club Nima Rhinos with its new kit - July



The RLEF's burgeoning African activities also merit mention alongside the Middle East - surely two of the sport's most promising emerging markets. Ghana continues to grow – the first league championship kicked off this year - and is now joined by Sierra Leone, which has received funding from UK Sport International and the Welsh Assembly, as well as Olympic Committee recognition. The interesting thing about such emerging markets – and we should include North America too – is that the sport has hardly scratched the surface in any of them, so the future promises a lot of progress.

Our new affiliates reflect the added emphasis we have placed on good governance, with all new Observers adopted by the RLEF in 2013 legal entities according to local law. The Hungarian and Greek federations and the Belgian and Spanish associations have all begun life as well-managed, democratic bodies, which bodes well for their evolution. Setting internal standards is a fundamental aspect of governance, and experienced NGBs such as Malta, whose Affiliate Membership application was exemplary, epitomise this Federation-wide push. More and more, our members are taking responsibility for raising their own internal standards as they are realising this is necessary for them to succeed, attract and maintain participants and benefactors from the public and private sectors.

Centrally, our Federation seeks to set a good example, and our governance has improved through RLEF Ltd submitting its statutory accounts to Companies House to meet regulatory requirements. A lot of the background financial work was done by James Trueman, seconded to the RLEF by the RFL. At the end of the year James left the RFL and I would like to thank him for all his hard work behind the scenes.

Another departure was the RFL's Director of European Development, Niel Wood, who, as the chairman said, has joined Salford. Niel was a staunch proponent for international rugby league, both within the RFL and in his advisory capacity with both the RLIF and RLEF. He had the deep respect of everyone and was a fantastic leader and strategic thinker at the top level of the sport.

Usually at this point in previous annual reports, I will give notice that the approaching year is going to be our busiest yet. Well, that has certainly proven to be the case so far and is once again certainly the case for 2014, with so many major projects being administered by the RLEF, all for the greater good of the game.

Danny Kazandjian
General Manager

A handwritten signature in black ink, appearing to be 'DK', with a long, sweeping diagonal stroke extending from the bottom left towards the middle of the signature.

TECHNICAL

COACHING

The main emphasis in 2013 was the completion of Phase 3 of the technical strategy which comprises the tutors that had been trained during Phase 2 delivering a Level 1 course in their own country whilst being observed by the RLIF Coaching Manager. This was done successfully in the Ukraine, the Netherlands, Eire, and the Czech Republic.



Eight new tutors were trained and 32 new Level 1 coaches qualified. In all cases I was heartened by the enthusiasm of those attending and their love of the sport. Moreover, knowledge of the game is increasing tremendously, and each country now has a strong core of people to take the game forward.

Each nation is at a different stage of development, and the new tutors need to be wary of attempting to go too far too quickly when delivering their Level 1 courses, particularly on the technical and tactical side. The aim is to produce the first generation of coaches who can introduce the sport of rugby league to newcomers and beginners, thus strengthening the grassroots of the sport. The course in the Czech Republic was particularly impressive, with 15 coaches attending, and I came away feeling that there are real grounds for optimism there, particularly as the CZRLA has made the decision not to attempt to attract 'dual code' players but to adopt a 'stand alone' policy.

Rugby League Ireland coach tutor training in Dublin, where local coaches received their Level 1 qualification from local educators - May



There was a real bonus in the Netherlands too, where two candidates from Brussels attended the course, entirely of their own volition. This resulted in the formation of a Belgian Rugby League organisation and, within a very short space of time, a game between Belgium and the Netherlands officially sanctioned by the RLIF. The key now is to ensure that all these newly qualified tutors are used strategically in their respective countries and that the coaches are active and attracting new players to the game.

We are already seeing the fruits of the technical strategy, with Serbian tutors delivering coaching courses in Hungary and Greece and Lebanese tutors doing likewise in Dubai.

Unfortunately, for a variety of reasons, Phase 3 was not completed throughout the membership, but hopefully this will happen in 2014. Nonetheless there was further development in Russia, where I conducted a second Phase 2 programme (the first, in Rostov, took place in 2012) with new coaches from Moscow and, most encouragingly, a revival of activity in St. Petersburg.

In addition, I visited South Africa for two weeks in September to deliver coach education seminars there. Originally this was meant to replicate much of the delivery in Europe, with a Level 1 course and tutor training. This did not happen, as the time allocated in each of four centres was much too short. I therefore delivered seminars rather than a full programme. However the massive presence of rugby union in South Africa does mean that the fundamental core skills are mostly in place and that there is more need for game awareness and tactical approaches to the sport. In total 30 coaches attended across four centres, Brakspan, Middleburg, Ermelo and Cape Town.

There is undoubtedly massive potential for development in South Africa, given the number of registered rugby union players and the fact that developments in that sport - a quota system in Super 15 - have reduced the number of opportunities for players to compete at the higher levels; but there are also numerous obstacles, notably a lack of finance and government recognition, RU hostility and the vast distances between the rugby league playing areas. Yet, as in Europe, there are committed and dedicated people willing and able to progress the sport, and a developed system of coach education would undoubtedly accelerate that process.

Martin Crick
Coaching Manager



MATCH OFFICIALS

I took up my post in July 2013, replacing Steve Davis, who has returned home to Australia following five years of good work forming a solid foundation amongst RLEF nations with regards to match officials strategy. 2013 has been a challenging year for match officials across the RLEF and whilst there have been many good stories, there is a need to continue the legacy work.



This work began to increase match officials numbers throughout the RLEF and to improve the quality of officiating to enable match officials from outside the RFL to officiate at an international standard during RLEF competitions. There have been visits to the UK from officials from all over Europe during 2013. During February, three officials, two from the Netherlands and one from Sweden, attended a Match Officials Conference in London, which looked at the practical side of the game, and included sessions with former international player Danny Ward and myself which helped develop game-based skills. These were backed up by courses and further training for these officials in their countries of origin, with further officiating visits to England undertaken during April.

Further successes from visits to England occurred in June when Sylvester Wellington from Ghana came to the UK and spent two weeks with London Skolars. Sylvester, who had qualified previously in Ghana under an RLEF training trip in 2012, officiated in the London and South East cup final as a touch judge and acted as reserve official in the Hemel Stags v Oldham Championship One game. This is great progress from an individual who has only been officiating a year. Other achievements included continuing progress in Greece and Hungary courtesy of growing relationships with the Serbian RL, a match officials structure developing in Denmark, and Lebanon reorganising its Level 1 course.



Steve Davis (left) delivered his last training course in Rotterdam - April

In September 2013, the RLEF undertook a training trip to South Africa on behalf of the RLIF. Phil Smith represented the RLEF referees, and found that there were many difficulties with the South African referee structure based around the size of the country, quality and quantity of the officials there and the training

facilities available. That said, three new match officials tutors and 16 officials, from a wide geographical spread, were qualified during the two week visit.

A number of challenges presented themselves during 2013 though. In Italy, there has been a loss of officials and tutors in the north east of the country, underlining the need for sound planning. Whilst the strength of playing in Russia was demonstrated by the victory in the European Shield, the refereeing framework in the country remains fragile, with no match official tutors currently active in the country. These are unwelcome situations in two important countries. The RLEF disciplinary committee had to intervene after a physical assault on a referee within a domestic competition where the official required hospital treatment which led to a lifetime ban. The match officials structure in Scotland remains a concern, and the RLEF will need to do more with Wales and Ireland in 2014 as part of the new RLEF 2014/15 strategy.

A comprehensive plan for 2014/15 has been produced which will ultimately target officials from the RLEF being presented with a pathway to officiate within the international competitions. An improved tutor manual and Level 1 course is currently being produced, which will allow tutors to train peers to a consistent standard, as in a Level 2 course, which will steer officials onto a performance pathway. This will be rolled out at the first ever RLEF match officials tutors conference in March 2014, ready for the summer season. This, coupled with greater involvement from the French Federation and planned camp weekends around international fixtures, will lead to a revised development impetus throughout the RLEF match officials community, with the ultimate goal being the officiating of the 2016 European second tier competition by non-RFL or FFRXIII officials. A group of 10 match officials / tutors from various parts of the RLEF has been assembled to deliver this two year plan and will form the first ever RLEF Match Officials Department – a truly significant step forward.

Tom Mather
Match Officials Manager



MEDIA

The 2013 report is very similar to that of previous years; we are making small strides in getting more information across the various media outlets and networks, our profile is slowly rising as a result but whether we are working smarter is still a debateable point. We have yet to really consolidate our news values, to inform and help educate our member nations as to what constitutes a story that is likely to grab the headlines – there are undoubtedly uncovered gems out there, particularly in terms of human interest, that we miss.



Conversely, time and effort goes into sending information that is only ever going to have limited appeal outside the immediate domestic market. Where we are becoming more proficient is in previewing, reporting on and following up international fixtures, although the competing nations themselves desperately need qualified media managers to coordinate the flow.

There is also an issue with scheduling which is two sides of the same coin and very difficult to coherently address. Some press releases or stories are appearing on social network sites before we have had time to read and assess them, let alone edit to suit. It is very hard, if not impossible to over-write a story once it is already out there and without wishing to suggest any form of blackout, it would look and work better if nations limited the initial distribution list until after the official release is agreed and prepared.

Again though, on the other hand, because of the increasingly voracious need for immediacy, receiving releases of events that have passed days ago is of little merit. We need to have a tighter media network among the nations, enabling us to share, co-ordinate and disseminate information for the benefit of all, access to a far more up to date database – both in local markets and for more accurately targeting our press releases - and the ability to be self-determining, not least for putting out world rankings and the like. At present there is no logical and coherent media policy or division of responsibility between the RLEF and RLIF.

Phil Caplan
Media Manager

A handwritten signature in black ink, appearing to read 'P. Caplan'.

GOVERNANCE

The process of improving the governance of both the RLEF and its members continued to be a key theme in 2013.

BOARD OF DIRECTORS

There was one change to the Board of Directors in 2013, with Independent Director Christen Farmer resigning his post on 23 August due to time constraints. He was replaced by Paul Nicholson on 18 December after a four-month recruitment process. Richard Graham's two-year mandate as an Independent Director was renewed on 23 August.

The Board held five meetings throughout the year. These were on 22 February (Leeds), 16 May (teleconference), 23 August (London), 24 October (London) and 27 December (teleconference).

	No. of meetings attended	No. of meetings held during Director's period of office
Christen Farmer	1	3
Richard Graham	4	5
Paul Nicholson	1	1
Nebojsa Sretenovic	4	5
Graeme Thompson	5	5
Maurice Watkins	5	5
Carlos Zalduendo	4	5

SUB-COMMITTEES

The RLEF administers three sub-committees, all of which operate independently of the plenary Board and reporting to it at the subsequent Board Meeting.

Financial, Audit and Risk Committee

The purpose of the FARC, constituted in February 2012, is to advise the Board on financial management, audit and risk management matters. It is chaired by Richard Graham, with Nebojsa Sretenovic and Graeme Thompson members. The FARC held five meetings throughout the year. These were on 8 February, 18 February, 9 May, 13 August and 8 October (all teleconference).

In addition to providing account and budget oversight, FARC also developed a risk register in close consultation with the executive team.

	No. of meetings attended	No. of meetings held during Director's period of office
Richard Graham	5	5
Nebojsa Sretenovic	4	5
Graeme Thompson	4	5

Media and Commercial Committee

The purpose of the MCC, constituted in June 2012, is to create and oversee a strategy that maximizes commercial opportunities and visibility for the RLEF. It was chaired by Christen Farmer until his resignation (23 August), with Richard Graham, Phil Caplan (joined 22 April) and Niel Wood (resigned 23 August) members. Paul Nicholson became the new chairman of the committee upon assuming his Directorship on 18 December. The MCC held two meetings throughout the year. These were on 12 March and 22 April (both teleconference).

	No. of meetings attended	No. of meetings held during period of office
Phil Caplan	1	1
Christen Farmer	2	2
Richard Graham	2	2
Paul Nicholson	0	0
Niel Wood	1	2

Remuneration Committee

The purpose of the Remuneration Committee, constituted in September 2011, is to oversee a formal and transparent procedure for developing policy on executive and consultant remuneration. It is chaired by Maurice Watkins, with Graeme Thompson (joined 22 February) and Carlos Zalduendo (joined 22 February) members. The committee held one meeting throughout the year, on 22 February (Leeds).

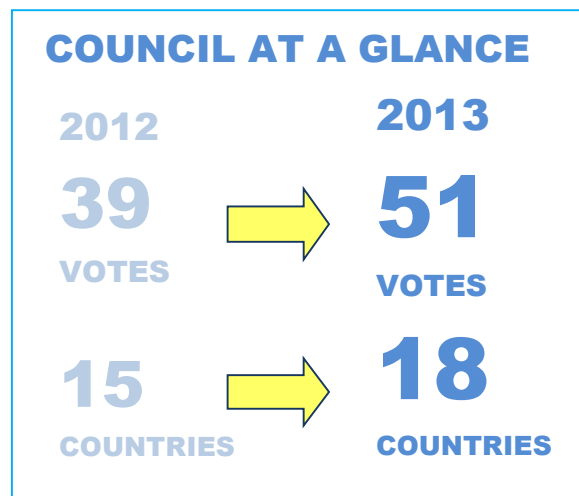
	No. of meetings attended	No. of meetings held during Director's period of office
Graeme Thompson	1	1
Maurice Watkins	1	1
Carlos Zalduendo	1	1

COUNCIL

There were six changes to the Council throughout the year. Jamaica, Russia and Ukraine became Full Members (11 total) while Canada, Latvia and Malta became Affiliate Members (seven total). These additions contributed to a more democratic and pluralistic federation.

Conference | AGM

The eleventh annual council meeting and fourth RLEF Conference were held on 23 August in London. A record number of 24 nations, an increase of four from 2012, attended. The conference included a Rugby League World Cup update delivered by RLWC Ltd GM Sally Bolton and operations manager Jon Dutton; an interactive consultation on the 2014-21 RLEF International Calendar delivered by RLEF Director Graeme Thompson; and a discussion on rugby league media with Australian journalist Steve Mascord.



Additional items included a presentation on social media by Hellenic Federation of Rugby League official George Stilianos; and a presentation on the Mediterranean Cup by Federazione Italiana Rugby League vice president Tiziano Franchini.

Nations represented at the 2013 Annual Council Meeting:

Belgium (BRLA), Czech Republic (CZRLA), Denmark (DRLF), England (RFL), France (FFRXIII), Germany (RLD), Ghana (GRL), Greece (HFRL), Ireland (RLI), Italy (FIRL), Latvia (LRL), Lebanon (LRLF), Malta (MRL), Netherlands (NRLB), Poland (PRXIII), Romania, Russia (ARLK), Scotland (SRL), Serbia (SRLF), South Africa (SARL), Sweden (SWRL), Ukraine (UFRL), UAE (ENRL), Wales (WRL).

Governance Foundation Project

The Governance Foundation Project, approved by the Sport Unit of the European Commission on 11 October 2011, concluded on 30 June. It was designed around the promotion of innovative approaches to strengthen the organisation of sport in Europe. Five Full Members of the RLEF served as Mentors to six smaller National Governing bodies, classified as Learners. The Rugby League European Federation (RLEF) was the lead partner and project co-ordinator. The Association of European Professional Football Leagues (EPFL) will provide football's perspective on European sport governance.

The objectives of the GFP were in line with the RLEF strategy: strengthening capacity building throughout and specifically elevating Learners from a Bronze to a Gold rating by project completion, making them more efficient, confident, transparent and effective organisations, for the general good of the sport in their country and the affiliated participants.



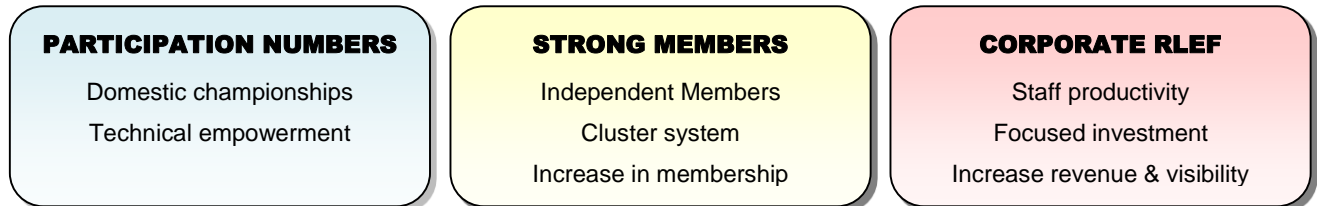
The RFL's Graeme Sarjeant (centre, seated behind laptop) attends the CZRLA's AGM in Prague - February

In addition to the completed 2012 activities, there were eight governance exchanges and four technical exchanges in 2013. The experiences obtained during this project contributed to the successful application for the Leadership Devolution Project (1 January 2014 – 30 June 2015). Significantly, the Learner GFP nations will all assume (monitored) leadership roles in the LDP, a clear sign of a maturing and evolving European rugby league.

STRATEGY

The 2010-17 strategy was adopted in August 2010. In 2013, its third full year, the RLEF can point to a number of positive indicators of growth throughout the Key Focus Areas.

KEY FOCUS AREAS



PARTICIPATION NUMBERS

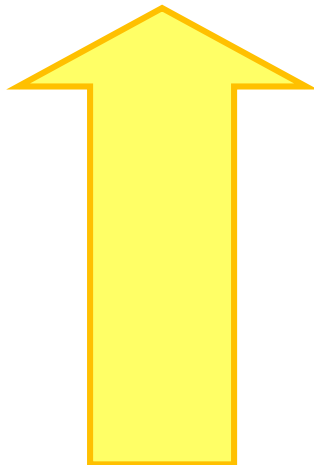
Significantly increasing participation numbers is the principal aim of the 2010-2017 RLEF strategy. Developing national championships is the main indicator to realising this strategic imperative, while the creation of technical departments, manned by trained and qualified local tutors, will support increasing participation numbers by providing competent coaches and match officials all of whom meet an RLEF standard.

63

...more teams in Wales

25

...more youth teams in France



45

...more matches in South Africa

51

...more matches in Ukraine

MEMBER ACTIVITY

SENIOR [community | military | professional | student | wheelchair | women]

	TEAMS 2012	TEAMS 2013	MATCHES 2012	MATCHES 2013
CANADA	9	9	16	21 + 1 ²
CZECH REPUBLIC	9	9	31+ 1 ²	28 + 3 ²
ENGLAND ³	885	940	8200	8200
FRANCE ³	136	134	1240	1220
GERMANY	6	-	7	-
IRELAND	27	21	65	42
ITALY	8	10	12	13
JAMAICA ³	13	16	51 + 3 ²	69 + 5 ²
LATVIA	3	4	3	12
LEBANON ³	10	8	50	29
MALTA	4	4	7	11
NORWAY	5	7	19	39
RUSSIA	18	11	32 + 5 ²	25
SCOTLAND	21 ¹	15	43 + 3 ²	35
SERBIA	17	17	62 + 2 ²	61
SOUTH AFRICA ³	17	21	97+ 1 ²	142 + 4 ²
UKRAINE	9	12	30	59
WALES	23	36	185	233

YOUTH [clubs | schools]

	TEAMS 2012	TEAMS 2013	MATCHES 2012	MATCHES 2013
CANADA	-	-	-	-
CZECH REPUBLIC	2	4	-	-
ENGLAND ³	3210	3242	11200	11200
FRANCE ³	460	485	3650	3800
GERMANY	4	5	4	8
IRELAND	-	-	-	-
ITALY	-	-	-	-
JAMAICA ³	27	30	18 + 12 ²	19 + 26 ²
LATVIA	2	2	1	-
LEBANON ³	13	8	4 + 7 ²	10+2 ²
MALTA	-	-	-	-
NORWAY	-	2	-	-
RUSSIA	40	40	28 + 26 ²	32
SCOTLAND ³	39	40	49	36
SERBIA	9	8	18 + 2 ²	30 + 1 ²
SOUTH AFRICA ³	-	-	-	-
UKRAINE	10	35	6 + 7 ²	28 + 13 ²
WALES	239	289	577	640

1. Inaccurate figure reported by NGB in 2012 annual report

2. Number of 9s tournament days

3. 2012/13 season

REPRESENTATIVE MATCHES [national | regional | women | wheelchair | student]

	YOUTH 2012	YOUTH 2013	SENIOR 2012	SENIOR 2013
CANADA	-	-	8	9
CZECH REPUBLIC	1	-	2	3
ENGLAND	14	11	27	36
FRANCE	5	3	9	15
GERMANY	3	3	5	3
IRELAND	-	-	17	15
ITALY	2	2	6	12
JAMAICA	-	0 + 3 ²	3	1
LATVIA	-	-	-	-
LEBANON	8	11	8	4
MALTA	-	-	2	2
NORWAY	-	-	2	4
RUSSIA	-	-	3	2
SCOTLAND	10	3	4	11
SERBIA	4	9	7	17
SOUTH AFRICA	-	-	-	6
UKRAINE	-	-	3	4
WALES	13	34	13	17



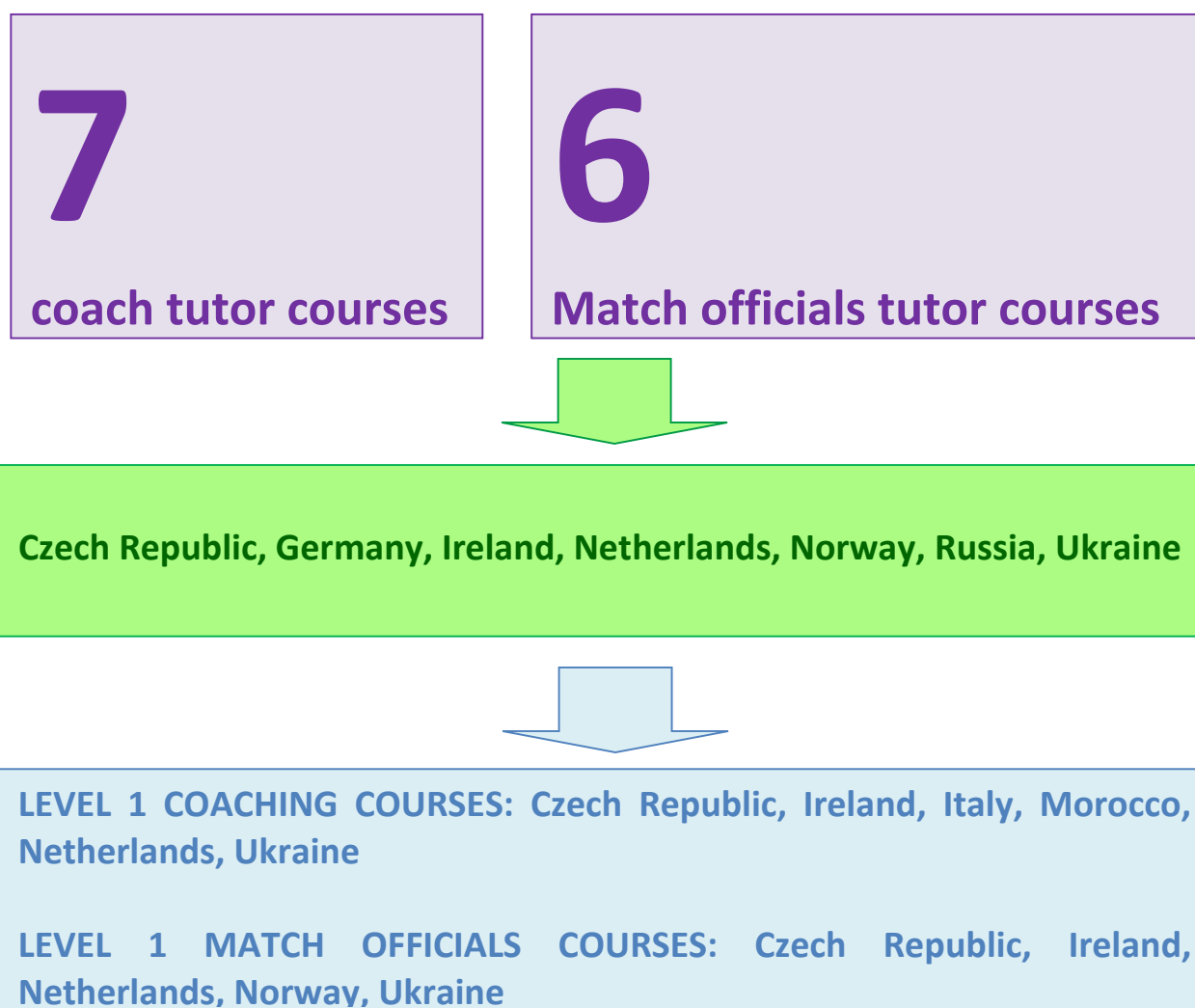
Clockwise, from top left: Primary school rugby in Jamaica; the South African championship; the Ukrainian under-16 championship; and Wales junior rugby in rude health.



Technical Strategy

The Technical Strategy was launched in 2011 and the initial phase was completed in 2013. The principal objective of the strategy was to train and qualify technical tutors in participating countries. The project was the RLEF's first organisation-wide investment in technical education. Its main obstacle was the possibility of high personnel turnover throughout what are predominantly volunteer NGBs and while this was evident in some countries, the project, as a foundation to European rugby league technical education and development, was a success. It allowed the RLEF to fine tune its courses and delivery and has prepared the ground for the next phase of education, from 2014-15.

In addition to this preparatory aspect, some nations are now equipped with competent, operational tutors who are not only running local courses but are also delivering transnationally too, thereby increasing the European dimension of the RLEF and strengthening their own capacity.



STRONG MEMBERS

Creating independent, sovereign NGBs which are committed to good governance and are aware of their own responsibilities – both to the sport and to local participants and legislation - is a central theme of RLEF strategy. Not only is this objective fundamental to any modern sporting organisation, the rapidity at which rugby league is growing within the RLEF makes it even more important. The production of transparent, democratic NGBs that include their stakeholders in the decision-making process is critical to rugby league's growth and 2013 saw further encouraging signs that RLEF members are maturing.



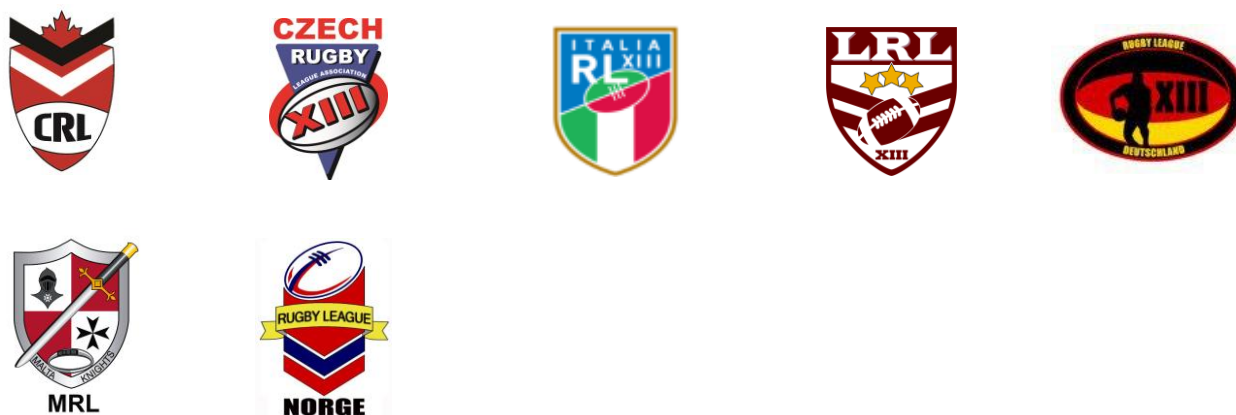
In addition to accepting three new Full and three new Affiliate Members, the RLEF also awarded Observer status to Belgium, Greece, Hungary, Saudi Arabia, Spain and the United Arab Emirates

The RLEF's Membership at the end of 2013 is as follows:

FULL



AFFILIATE



OBSERVER

Asociacion Espagnol de Rugby League, Belgium Rugby League Association, Dansk Rugby League Forbund, Emirates National Rugby League, Fédération Marocaine de Rugby League, Hellenic Federation of Rugby League, Hungarian Rugby League Federation, Nederlandse Rugby League Bond, Saudi Arabian Rugby League Association, Svenska Rugby League Förening, Trinidad & Tobago Rugby League

UNRANKED

Association of Catalunya Rugby League, Bosnia & Herzegovina, Ghana, Poland, Romania, Sierra Leone.

CORPORATE ORGANISATION

The RLEF is committed to becoming a more efficient and productive organisation at every level of the business.

Staff

As the Federation continued to position itself more as a northern hemisphere governing body, due to the demands of an expanding operational footprint, the staffing structure is concurrently being adapted. Maintaining national development officers in an organisation with a rapidly increasing membership base has become less practical. German development manager Uwe Jansen left the organisation in August, unfortunately due to ill health, after four years of work in Germany, while Ukraine's Artur Martyrosyan left in December following the UFRL's elevation to Full Member status.

In the Czech Republic, under Andy Mulhall's leadership, there were three new senior clubs and two new youth teams, plus a second purpose-built rugby league field constructed by a municipal council. This is a major achievement that deserves the highest praise. In Italy, Kelly Rolleston has contributed to the registration of 10 clubs under Italian law, youth rugby league for the first time and high quality coach education for a new breed of local coaches. In West Africa, Sylvester Wellington was the driving force behind the creation of seven clubs plus around 20 schools which now play rugby league.

Our regional directors are working with increasing portfolios, and it would be in the Federation's interests for Romeo Monteith, Remond Safi and Jovan Vujosevic's operational workloads to be lightened to allow a more strategic approach to their roles, particularly the search for partnerships with donor agencies in Africa, the Caribbean and the Middle East, not to mention the Council of Europe.

Revenue | visibility

For a full report on the RLEF's revenue please refer to the financial report, below.

The recruitment of non-executive director Paul Nicholson towards the end of the year showed the RLEF's commitment to expanding its social media profile. Paul now chairs the Media-Commercial Committee and will focus not only on social media but also broadcast partnership, which the RLEF is now in a position to cultivate independently, and sponsorship.

Strategic partnerships

The two most important strategic partnerships for the RLEF remain the European Union and UK Sport. In the summer the 2012-13 Governance Foundation Project and the Technical Foundation Project both came to an end. The first was through the European Commission's Sport Unit, the second through the Leonard da Vinci programme. Both programmes provided the RLEF with the opportunity to increase its European dimension and increase investment in education in the important fields of governance and technical matters.

In October, the Sport Unit approved the Leadership Devolution Project, which includes 17 partner nations from EU Programme Countries and represents the biggest investment in governance/technical matters in RLIF and RLEF history, with the EU contributing €195.000 and the RLEF-RLIF contributing a further €135.000 for the 18-month project.

On 1 January 2014 the EU's Erasmus + programme will begin. It will cover the Commission's education, training, youth and sport programmes and provides the RLEF with enhanced opportunities to seek investment in these critical areas, all of which dovetail perfectly with the 2010-17 strategy.

Mark Jones and the students of Prince of Wales School, Freetown, Sierra Leone – April



UK Sport, through its international arm, continues to provide excellent support for the Federation's African activities. In June 2013 the RLEF signed an agreement for the IDEALS PROFESSIONAL programme, valued at £17500 over four years. The aim is to provide professional staff with the opportunity to visit Ghana and support the development of local coaches and match officials. Furthermore, UKSI also granted £8000 to support a new Sierra Leone rugby league initiative. Wales-Africa Community Links also granted £2500 to this project, enabling a site visit in April.

OFFICIAL COMPETITIONS

The RLEF's Members and affiliated nations played more international matches in 2013 than in any other year, although this was largely due to the 2013 Rugby League World Cup and the Festival of World Cups.

The RLIF's new match sanctioning protocol was also launched, streamlining and defining the process for sanctioning an official international match for the first time in the sport's history.

59

**NON-WORLD CUP MATCHES
INVOLVING NATIONAL
REPRESENTATIVE TEAMS**

EUROPEAN SHIELD



The four-team, biennial European Shield concluded with Russia crowned champions in August. Italy won all its fixtures in 2013 to finish second while fourth-placed Germany drops out.

* Germany failed to travel to Russia due to visa problems, with the RLEF awarding the Russians the match 30-0.

	W	L	PF	PA	+/-	Pts
RUS	5	1	157	112	45	10
ITA	4	2	244	134	110	8
SER	2	4	144	130	14	4
GER	1	5	101	270	-169	2

18 MAY	SER 46-10 GER	Belgrade
25 MAY	SER 10-24 RUS	Belgrade
29 JUN	ITA 38-18 RUS	Este
27 JUL	GER 30-66 ITA	Karlsruhe
10 AUG	RUS 30-0 GER*	Naro-Fominsk
14 SEP	ITA 32-20 SER	Este



EUROPEAN BOWL



Ukraine added to its 2009 European Bowl triumph through two convincing wins against Norway and the Czech Republic, and in doing so was promoted to the 2014-15 European Shield. Norway was stripped of its competition points after being found guilty of fielding ineligible players.



	W	L	PF	PA	+/-	Pts
UKRAINE	2	0	110	18	92	4
NORWAY	1	1	40	56	-16	0
CZECH REP.	0	2	18	94	-76	0

6 JUL	UKR 42-14 NOR	Kharkov
13 JUL	NOR 26-14 CZE	Oslo
28 SEP	CZE 0-64 UKR	Vrchlabi

AMATEUR FOUR NATIONS

The English Lions, made up of the country's best amateur players, having replaced the English Lionhearts in 2012, proved far too strong for the other Home Nations' best domestic players.



	W	L	PF	PA	+/-	Pts
ENG LIONS	3	0	200	0	200	6
WALES A	2	1	112	86	26	4
SCOTLAND A	1	2	56	184	-128	2
IRELAND A	0	3	40	138	-98	0

13 JUL	WAL 0-54 ENG	Neath
3 AUG	IRE 14-48 WAL	Limerick
10 AUG	SCO 38-26 IRE	Sunnyside
23 AUG	ENG 52-0 IRE	Hemel
24 AUG	WAL 64-18 SCO	North Wales
14 SEP	ENG 94-0 SCO	Wath Brow

AFFILIATED COMPETITIONS

NORDIC CUP



The fourth edition Nordic Cup saw the Swedes take their first silverware. All participants agreed to raise the bar in 2014, ensuring all matches were rated as official internationals.

	W	L	PF	PA	+/-	Pts
SWEDEN XIII	2	0	78	34	44	4
DENMARK XIII	1	1	72	48	24	2
NORWAY XIII	0	2	32	100	-68	0

20 JUL	NOR 22-40 SWE	Oslo
3 AUG	SWE 38-12 DEN	Kävlinge
17 AUG	DEN 60-10 NOR	Christianshavn

MENA U18 CHAMPIONSHIP

The deteriorating security situation in Lebanon meant that only the MENA Under-18 Championship could be played in 2013, with the hosts recording two narrow wins in a closely contested series.



	W	L	PF	PA	+/-	Pts
LEBANON	2	0	56	40	16	4
SAUDI RL SEL.	0	2	40	56	-16	0

14 FEB	LEB 30-18 KSA	Beirut
16 FEB	LEB 26-22 KSA	Beirut

TOURNOI EUROPEEN des CAPITALES UNIVERSITAIRE

The Ile de France (Paris) rugby league staged this men's and women's invitational tournament contested largely by student players from the three entrants, Hungary, Italy and the hosts. The tournament comprised two days of shortened version 13-a-side rugby league, with both Italian sides undefeated.



	MEN	WOMEN
28 JUN	IDF 4-28 ITA	IDF 14-20 ITA
28 JUN	28 IDF-6 HUN	IDF 32-0 HUN
28 JUN	ITA 36-0 HUN	ITA 48-6 HUN
29 JUN	IDF 32-18	IDF 18-16 HUN

OTHER INTERNATIONALS

Below is a list of all internationals with at least one RLEF Member national team participating.

SENIOR INTERNATIONALS

DATE	FIXTURE	LEVEL	VENUE
1 MAY	GREAT BRITAIN POLICE 4-24 ARMY	MEN	Stanningley
4 MAY	GERMANY 28-20 NETHERLANDS	MEN	Heidelberg
22 MAY	GREAT BRITAIN POLICE 18-36 RAF	MEN	Siddal
29 JUN	NETHERLANDS 6-22 BELGIUM	MEN	Delft
29 JUN	CZECH REP 28-22 SERBIA U20	OPEN AGE / YOUTH	Vrchlabi
29 JUN	FRANCE 102 – AUSTRALIA 12	WHEELCHAIR	Nanterre
30 JUN	AUSTRALIA 112-0 SERBIA	ARMED FORCES WORLD CUP	Colchester
30 JUN	GREAT BRITAIN 32-8 NEW ZEALAND	ARMED FORCES WORLD CUP	Colchester
3 JUL;	WALES 104-6 IRELAND	WHEELCHAIR WORLD CUP	Medway
3 JUL;	AUSTRALIA 148-0 SCOTLAND	WHEELCHAIR WORLD CUP	Medway
3 JUL;	ENGLAND 20-28 FRANCE	WHEELCHAIR WORLD CUP	Medway
3 JUL	GREAT BRITAIN 98-0 SERBIA	ARMED FORCES WORLD CUP	Colchester
5 JUL	NEW ZEALAND 88-0 FRANCE	WOMEN'S WORLD CUP	Batley
5 JUL	ENGLAND 6-14 AUSTRALIA	WOMEN'S WORLD CUP	Batley
5 JUL	GREAT BRITAIN 18-56 AUSTRALIA	POLICE WORLD CUP	Dewsbury
6 JUL	ENGLAND 86-8 IRELAND	WHEELCHAIR WORLD CUP	Medway
6 JUL	WALES 25-16 AUSTRALIA	WHEELCHAIR WORLD CUP	Medway
6 JUL	FRANCE 154-2 SCOTLAND	WHEELCHAIR WORLD CUP	Medway
6 JUL	CANADA 36-20 USA	MEN	Toronto
6 JUL	NEW ZEALAND 62-6 SERBIA	ARMED FORCES WORLD CUP	Colchester
6 JUL	GREAT BRITAIN 16-20 AUSTRALIA	ARMED FORCES WORLD CUP	Colchester
8 JUL	ENGLAND 16-34 NEW ZEALAND	WOMEN'S WORLD CUP	Featherstone
8 JUL	FRANCE 0-72 AUSTRALIA	WOMEN'S WORLD CUP	Featherstone
9 JUL	WALES 6-50 ENGLAND	WHEELCHAIR WORLD CUP	Medway
9 JUL	IRELAND 26-6 SCOTLAND	WHEELCHAIR WORLD CUP	Medway
9 JUL	FRANCE 72-6 AUSTRALIA	WHEELCHAIR WORLD CUP	Medway
10 JUL	AUSTRALIA 110-0 SERBIA	ARMED FORCES WORLD CUP	Colchester
10 JUL	GREAT BRITAIN 16-20 NEW ZEALAND	ARMED FORCES WORLD CUP	Colchester
11 JUL	GREAT BRITAIN 0-72 FIJI	POLICE WORLD CUP	Bradford

SENIOR INTERNATIONALS (Cont.)

DATE	FIXTURE	LEVEL	VENUE
11 JUL	ENGLAND 81-10 AUSTRALIA	WHEELCHAIR WORLD CUP	Medway
11 JUL	FRANCE 71-30 WALES	WHEELCHAIR WORLD CUP	Medway
11 JUL	ENGLAND 42-6 FRANCE	WOMEN'S WORLD CUP	Batley
13 JUL	IRELAND 36-14 SCOTLAND	WHEELCHAIR WORLD CUP	Medway
13 JUL	ENGLAND 54-0 FRANCE	WOMEN'S WORLD CUP	Hunslet
13 JUL	AUSTRALIA 14-16 WALES	WHEELCHAIR WORLD CUP	Medway
13 JUL	ENGLAND 40-42 FRANCE	WHEELCHAIR WORLD CUP	Medway
20 JUL	CANADA 38-14 JAMAICA	MEN	Toronto
24 AUG	USA 44-16 CANADA	MEN	Philadelphia
7 SEP	CANADA 20-28 USA	MEN	Toronto
15 OCT	WALES 62-12 WALES SELECT	MEN	Conwy
19 OCT	LEBANON 34-4 FIJI AUSTRALIA	MEN	Sydney
26 OCT	AUSTRALIA 28-20 ENGLAND	WORLD CUP	Cardiff
26 OCT	WALES 16-32 ITALY	WORLD CUP	Cardiff
27 OCT	HUNGARY 0-90 GREECE	MEN	Budapest
27 OCT	PAPUA NEW GUINEA 8-9 FRANCE	WORLD CUP	Hull
28 OCT	FIJI 32-14 IRELAND	WORLD CUP	Rochdale
29 OCT	TONGA 24-26 SCOTLAND	WORLD CUP	Workington
2 NOV	ENGLAND 42-0 IRELAND	WORLD CUP	Huddersfield
1 NOV	NEW ZEALAND 48-0 FRANCE	WORLD CUP	Avignon
3 NOV	SCOTLAND 30-30 ITALY	WORLD CUP	Workington
3 NOV	WALES 16-24 USA	WORLD CUP	Wrexham
7 NOV	SCOTLAND 22-8 USA	WORLD CUP	Salford
9 NOV	ENGLAND 34-12 FIJI	WORLD CUP	Hull
9 NOV	AUSTRALIA 50-0 IRELAND	WORLD CUP	Limerick
10 NOV	TONGA 16-0 ITALY	WORLD CUP	Halifax
10 NOV	WALES 24-28 COOK ISLANDS	WORLD CUP	Neath
11 NOV	FRANCE 6-22 SAMOA	WORLD CUP	Perpignan
15 NOV	NEW ZEALAND 40-4 SCOTLAND	WORLD CUP	Leeds
16 NOV	ENGLAND 34-6 FRANCE	WORLD CUP	Wigan
23 NOV	ENGLAND 18-20 NEW ZEALAND	WORLD CUP	London

YOUTH INTERNATIONALS

DATE	FIXTURE	LEVEL	VENUE
29 MAR	ENGLAND 26-34 FRANCE	U16	Widnes
2 APR	ENGLAND 42-16 FRANCE	U16	Wakefield
6 APR	WALES 18-22 ENGLAND	U16	Neath
25 MAY	FRANCE 28-52 ENGLAND	U18	La Reole
23 JUN	ENGLAND COLLEGES 54-6 SCOTLAND	U19	Rochdale
30 JUN	GERMANY U20 0-68 BARLA U18	YOUTH	Handschuhsheim
3 JUL	GERMANY U20 2-82 BARLA U18	YOUTH	Handschuhsheim
6 JUL	ITALY 10-26 SERBIA	U18	Este
15 AUG	ENGLAND COLLEGES 32-20 RFL ACADEMIES	U19	Leeds
16 AUG	SERBIA 36-2 GERMANY	U18	Belgrade
17 AUG	GERMANY 2-88 ENGLAND MIDLANDS	U18	Belgrade
18 AUG	SERBIA 4-20 ENGLAND MIDLANDS	U18	Belgrade
30 AUG	WALES 18-25 ENGLAND	U16	Taff's Well
15 SEP	ENGLISH LIONS 46-16 SCOTLAND	U18	Wath Brow
6 OCT	WALES 40-10 ENGLISH LIONS	U18	Taff's Wells
13 OCT	WALES U19 0-38 ENGLAND U18	YOUTH	Taff's Well
18 OCT	WALES U19 4-64 ENGLAND U18	YOUTH	Taff's Well
19 OCT	SCOTLAND 0-30 WALES	U18	Glasgow
19 OCT	LEBANON 28-12 FIJI AUSTRALIA	U16	Sydney
19 OCT	LEBANON 22-18 FIJI AUSTRALIA	U18	Sydney
19 OCT	LEBANON 30-12 FIJI AUSTRALIA	U20	Sydney

STUDENT INTERNATIONALS

DATE	FIXTURE	LEVEL	VENUE
24 MAY	ENGLAND 13-6 OUEST SELECTION	WOMEN	Biganos
26 MAY	ENGLAND 26-18 AQUITAINE	WOMEN	Tonneins
5 JUN	ENGLAND 42-24 GB TEACHERS	MEN	Stanningley
12 JUN	ENGLAND 22-16 RAF	MEN	Stanningley
4 JUL	NEW ZEALAND 122-0 RUSSIA	WORLD CUP	Bradford
4 JUL	SCOTLAND 0-96 AUSTRALIA	WORLD CUP	Bradford
4 JUL	WALES 30-10 SOUTH AFRICA	WORLD CUP	Batley
4 JUL	ENGLAND 54-6 IRELAND	WORLD CUP	Batley
7 JUL	SCOTLAND 46-4 RUSSIA	WORLD CUP	Leeds
7 JUL	SOUTH AFRICA 42-24 IRELAND	WORLD CUP	Leeds
7 JUL	ENGLAND 46-12 WALES	WORLD CUP	Leeds
10 JUL	SCOTLAND 22-58 NEW ZEALAND	WORLD CUP	Dewsbury
10 JUL	AUSTRALIA 108-0 RUSSIA	WORLD CUP	Dewsbury
10 JUL	WALES 56-4 IRELAND	WORLD CUP	Castleford
10 JUL	ENGLAND 52-14 SOUTH AFRICA	WORLD CUP	Castleford
12 JUL	IRELAND 42-18 RUSSIA	WORLD CUP	Dewsbury
12 JUL	ENGLAND 18-17 NEW ZEALAND	WORLD CUP	Dewsbury
12 JUL	AUSTRALIA 42-10 WALES	WORLD CUP	Batley
12 JUL	SCOTLAND 10-64 SOUTH AFRICA	WORLD CUP	Batley
14 JUL	ENGLAND 16-26 AUSTRALIA	WORLD CUP	Leeds
26 OCT	ENGLAND 32-0 GB TEACHERS	WOMEN	Cronton
2 NOV	ENGLAND 22-0 COMBINED SERVICES	WOMEN	Leeds

FINANCIAL REPORT

Income Statement

Year to 31 December 2013

	2013	2012
	£	£
<u>Income</u>		
Members Fees	4,468	4,855
RFL & RLIF Contribution	124,307	177,657
Grants	61,938	63,005
Commercial Income	2,251	16,532
Other income	11,219	390
Turnover	204,182	262,439
<u>Expenditure</u>		
Grants	24,915	28,663
Activity	58,120	84,597
Administration	120,535	148,581
Taxation	122	119
Total Expenditure	203,693	261,960
Surplus	489	479

Balance Sheet

As at 31 December 2013

	2013		2012	
	£	£	£	£
<u>Current Assets</u>				
<i>Cash</i>	176,406		119,872	
<i>Debtors</i>	1,125		3,300	
<i>Accrued Income</i>	25,957		-	
		203,488		123,172
<u>Current Liabilities</u>				
<i>Creditors</i>	59,785		79,534	
<i>Accruals</i>	2,400		4,150	
<i>Deferred Income</i>	140,336		39,010	
		(202,521)		(122,694)
Net Assets		967		478
<u>Equity</u>				
<i>Retained Surplus</i>		967		478
Total Equity		967		478

2013 FINANCIAL ANALYSIS

Executive Summary

The RLEF continues to aspire to be a self-funding organisation. During 2013 previously awarded external grants were used to fund improved governance practices throughout the organisation. Looking forward, the European Union awarded an additional grant for a combined governance/technical project that commences in 2014.

Overall the financial position of the RLEF improved during the year. Cost controlling continued, with reductions in costs being seen throughout the organisation. Although income and associated costs both decreased, the balance sheet was much improved. The cash balance increased by nearly 50% from £120k to £176k. However, much of this was due to the 2014/15 EU grant being paid to the RLEF in December 2013. This grant is not reflected in the 2013 income statement and has been deferred into 2014 and beyond. The level of creditors, excluding deferred income, dropped from £80k in 2012 to £60k in 2013.

Income - Grants

The level of grants received from the RLIF and RFL decreased between 2012 and 2013 from £178k to £124k. Some of this decrease was due to exchange rate differences (c.£24k), and some of the difference was due to RFL income that has been held back until 2014 (c.£29k) when the legacy from the World Cup will be delivered. In addition the RLEF continues to gratefully receive officer time from the RFL in support of its objectives.

The grants recognised in the year include the EU Governance Foundation Project grant, the Leonardo Da Vinci project, and the UK Sport International and Wales Africa Community Links grants for the two projects in West Africa. The recognition of income is matched by costs recognised in the year, so while this line has decreased slightly from £63k to £62k, the net effect to the profit is £nil. It is worth noting that some funds have been deferred for future years – notably the 2014/15 EU grant (£114k, or 70% of the total grant) and the grants in relation to the Sierra Leone project (£7k). Also, it is worth noting that the 2012/13 EU Governance grant has some funds still to be paid. To be prudent this report recognises £17k of the £26k remaining in the 2014 income statement, and will release the final £9k in 2014 when it has all been received.

Income - Sponsorship

The sponsorship income recognised in 2014 (£2k) is linked to the West African project in Ghana. This leaves £10k that has been deferred into 2014 and beyond, with a further £7k expected to be paid in 2014.

The sponsorship that was recognised in 2012 all related to Alitalia's sponsorship – this was not continued in 2013.

Expenditure

Grants to nations fell from £28,663 in 2012 to £24,915 in 2013. Nations that performed strongly, in line with the RLEF strategy, benefitted from higher than budgeted grants. The overall reduced grants figure was affected by the RLIF direct A\$25k contribution to its Full Members in 2013, removing some of the RLEF awards. This state of affairs will continue into 2014.

The Activity costs of the RLEF reduced from £85k in 2012 to £58k in 2013, but the main decrease in activity is direct work on the EU governance grant, with some costs for that project being reflected in the Grants and Administration sections. Expenditure on other items (e.g. Euro Shield, West African Project, Equipment, etc.) has either stayed the same, or increased from the previous year.

Work on reducing Administration costs continued in 2013, with the main savings being made on the Central and Regional Administration. This is generally in line with the budgeted expectations. Overall this line of expenditure reduced from £149k in 2012 to £121k in 2013.

Looking forward

The RLEF will continue to be cost conscious, making sure that its funds are spent appropriately, in support of its strategic aims to (a) increase participation; (b) strengthen the membership corps; and (c) improve its own corporate performance.

The aim to be a self-sustaining organisation also continues with external revenue 39% of the annual total, compared to 0.6% in 2009. In addition the RLEF continues to seek commercial partners to engage with. In the shorter term, the RLEF has applied for grants from the RLIF to assist its day to day work, reflecting its greater operational and strategic footprint, and also to support the 2014 European Championship.

THE RLEF BOARD

MAURICE WATKINS CBE – CHAIRMAN

Maurice became RLEF chairman in August 2012 when serving as the interim chair of the RFL. He is Joint Senior Partner in a prominent law firm and a former Director of Manchester United. Maurice is on the boards of RFL, RLIF and Lancashire County Cricket Club. He is also currently chair of The Greyhound Board of Great Britain, British Swimming and Barnsley Football Club.



RICHARD GRAHAM – INDEPENDENT DIRECTOR

Following a 25-year career in sport, including stints as chief executive of the Professional Squash Association and Parallel Media Group plc, Richard joined the RLEF Board in July 2011. Currently, he is the Executive Director of Impact Sports Recruitment and a Special Executive Advisor to Sporting Equals.



PAUL NICHOLSON – INDEPENDENT DIRECTOR

Paul Nicholson is a sports media specialist who has worked with a number of governing bodies and federations. He is currently CEO of Insideworldfootball. He worked with London Broncos in the early days of their set up and coached a development group in the community and is a former international water polo player for Wales.



NEBOJŠA SRETENović – MEMBER

ELECTED DIRECTOR

The first ever Serbian national team captain, Nebojša Sretenović played a pivotal role in the formation of the Serbian rugby league in 2001 and has been an ever-present member of the SRLF Board, serving as president from 2009-11. In 2010 the RLEF Council elected Nebojša to the RLEF Board.



GRAEME THOMPSON – MEMBER ELECTED

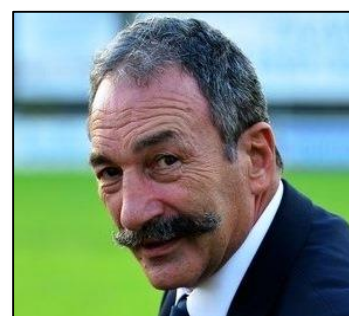
DIRECTOR

The RFL's former Performance Director and England team manager during the 2008 Rugby League World Cup, Graeme, a former Scotland rugby league international, was elected to the RLEF Board in 2010. He is currently the Performance Director for GB Water Polo. Graeme represents the RLEF on the RLIF board.

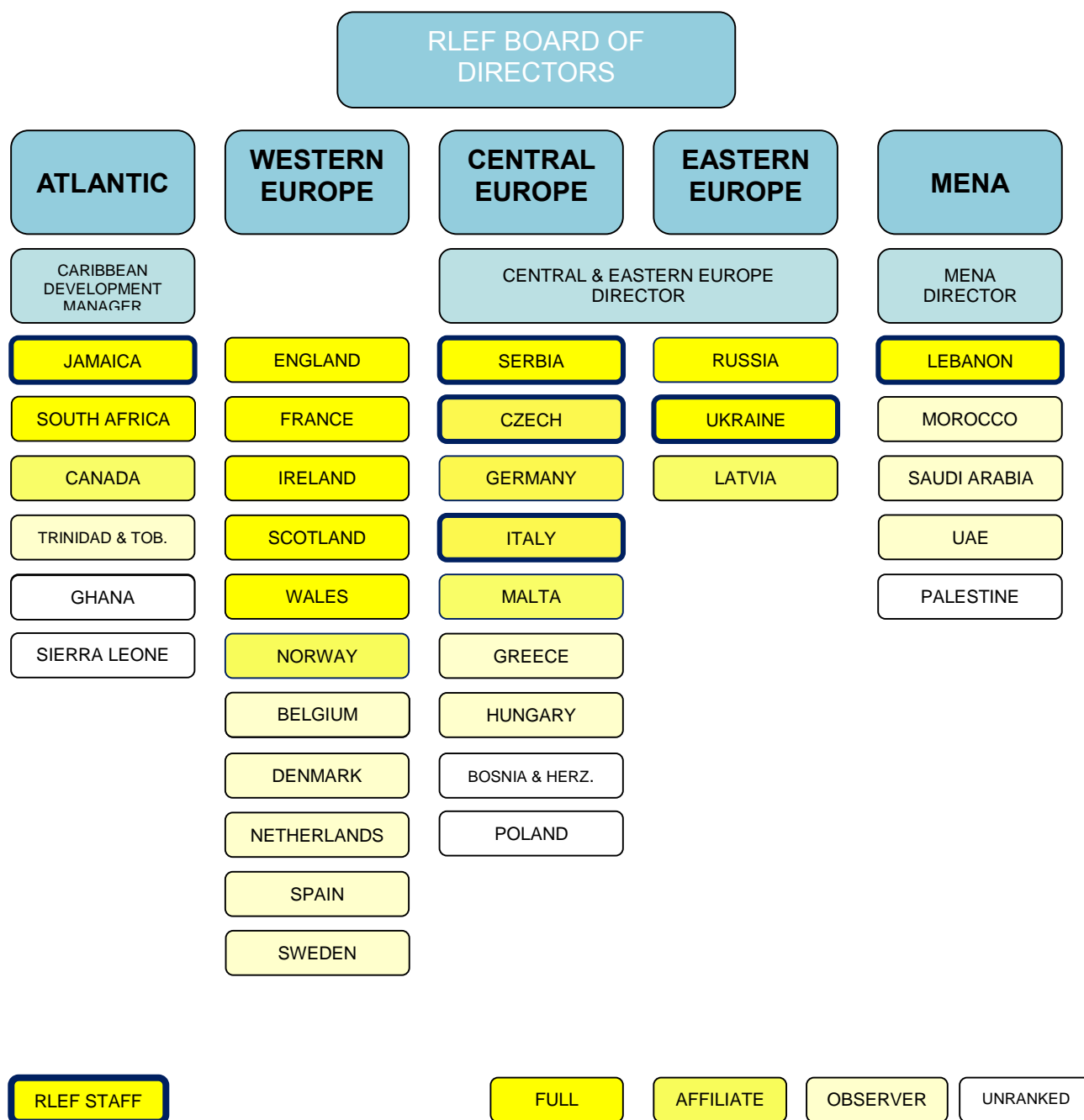


CARLOS ZALDUENDO – VICE CHAIRMAN

Upon assuming the presidency of the French Federation in November 2012, Carlos joined the RLEF Board, becoming vice chairman in February 2013. Capped 25 times for France, Carlos spent 10 years as a Director of the FFRXIII and has a long association with Toulouse Olympique. He is a retired police officer. Carlos represents the RLEF on the RLIF board.



APPENDIX 1: RLEF ORGANISATION



APPENDIX 2: DOMESTIC CHAMPIONSHIPS

In 2013 [or 2012/13 season] the following NGBs ran domestic championships:

MEMBER	LEVEL	Sr. LEAGUE [teams] CHAMPIONS	2 ND DIVISION* [teams]	Jr. LEAGUE [teams]
ENGLAND	FULL	Engage Super League [14] Wigan Warriors	Cooperative Ch. [14] Cooperative Ch. 1 [9] Multiple amateur comps	Multiple
FRANCE	FULL	ELITE 1 [9] Pia SM	ELITE 2 [12] National Division [22] Fédérale [30]	Multiple
IRELAND	FULL	Leinster Conference [5] Munster Conference [5] Treaty City Titans	-	-
JAMAICA	FULL	Championship [6] Duhaney Park Red Sharks	National Division 2 [4] Colleges [6]	4 age groups
LEBANON	FULL	Championship [5] Tripoli City RLFC	RL Shield [3]	U14 [5] U16 [8]
RUSSIA	FULL	Centre Conference [4] South Conference [6] North Conference [1] Vereya Bears RLFC	-	16 clubs
SCOTLAND	FULL	North Conference [4] Centre Conference [5] Aberdeen Warriors	University [4]	4 divisions
SERBIA	FULL	First Division [6] Dorćol Spiders	Second Division [6] Third Division [5]	U18 [5]
SOUTH AFRICA	FULL	Rhino Cup [8] UP Tuks RL	Protea Cup [13]	-
UKRAINE	FULL	Championship [6] Legion XIII	Second Division [6]	U18 [5] U16 [5]
WALES	FULL	Conference Premier [6] Torfaen Tigers	North Wales Conf. [5] South Wales Merit [5]	4 divisions
CANADA	AFFILIATE	Ontario Championship [4] Toronto City Saints	British Columbia Ch. [5] Sea To Sky Eagles	-

CZECH R.	AFFILIATE	Championship [5] Lokomotiva Beroun	Second Division [5] Chrudim Angels	-
GERMANY	AFFILIATE	-	-	U14 [2] U16 [2]
ITALY	AFFILIATE	North-West Ch. [5] North-East Ch. [5] XIII Del Ducato Piacenza	-	-
LATVIA	AFFILIATE	Latvian Championship [4] Valmieras Fēnikss	-	-
MALTA	AFFILIATE	MRL Dove Men+Care Ch. [4] Malta Origin	-	-
NORWAY	AFFILIATE	Premiership [7] Oslo Capitals	-	-

- * Minimum criterion for Full Members is four second grade or U21 or student teams. “Clubs” in this section can include university or college teams as well as private sports clubs.